



**November 2022**

Dear Friends,

It is hard to believe the season of giving is upon us and soon we'll be celebrating our Fall 2022 graduates!

The global Giving Tuesday is November 29 and we hope you will join us in celebrating this day by supporting the [School of Earth and Space Exploration Gift](#) account or any number of [School funds and programs](#). Your generous donations help support our students and allow us to continue our academic and public programs.

We were thrilled to watch the much-anticipated launch of Artemis I earlier this month. Onboard the Space Launch System rocket's five-foot-tall Orion **stage** adapter spacecraft is the ASU-led **LunaH-Map CubeSat**. Please join me in congratulating Professor Craig Hardgrove and the whole LunaH-Map Team as they seek out and map water on the Moon.



We hope you enjoy this newsletter featuring the latest school news, student successes, announcements and features. For more information on our research, events, students, faculty, and alumni, we've included links to social media at the end of this newsletter. Please follow us, share and retweet.

Be well and keep safe,

A handwritten signature in cursive script that reads "Meenakshi Wadhwa".

Meenakshi (Mini) Wadhwa  
Director of the School of Earth and Space Exploration (SESE)

## In the News

### This imaginative tech is transforming conservation

A team of ASU interdisciplinary scientists, including Assistant Research Professor Jnaneshwar Das, are

applying conservation technology in new innovative ways. This collaboration of researchers is expanding their reach — and their senses — with labs that fly, drones that swim, cameras that orbit and other imaginative technology to study ecosystems around the world. **[Read more](#)**





## Serpentine rocks provide evidence of fossil life on Earth

A team of scientists led by Jon Lima-Zaloumis, ASU PhD graduate and

including Maitrayee Bose, assistant professor, participated in the Oman Drilling Project and were able to investigate drill core samples of the Samail Ophiolite. By studying these samples in detail using instruments available at ASU and abroad, the team was able to uncover fossil evidence of microbes that were once living and subsequently entombed in the underground serpentinizing environment.

[Read more](#)

## Events

### Giving Tuesday is November 29

Your generosity allows us to support research discoveries, student success, and make a difference for the School of Earth and Space Exploration community. Together we can make a difference.

[Support the School's Gift Account](#)

# GIVING TUESDAY



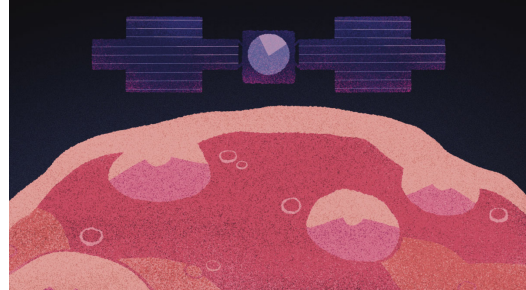
### Virtual Night Sky

As we begin to observe winter skies, we look for some of the last celestial events of 2022. Join us to share in the marvel of the “occultation” of Mars by the Moon, and the parade continues with Venus and Orion's spectacular return to

the night sky. Register in advance for FREE virtual events on **Wednesday, November 30 and December 14 at 7 p.m.**

## Psyche Inspired Art Exhibit

Explore "Psyche Inspired," a new art exhibit at Fletcher Library on the West campus. On display during regular library hours from now until December 9.



**Get additional details on this FREE exhibit.** Psyche is both the name of an asteroid orbiting the Sun between Mars and Jupiter — and the name of a NASA space mission to visit that asteroid, led by ASU.

## Alumni Announcements

### Alumni: Keep it current!

Join us on [LinkedIn](#) and [update your contact information](#) so you can receive the latest School and university news, exclusive career and professional development opportunities, unique ASU experiences, invitations to special events and much more!

**ASU** School of Earth and  
Space Exploration  
Arizona State University



**#1 in the U.S. for innovation**  
ASU ahead of MIT and Stanford  
— U.S. News & World Report, 8 years, 2016–2021