

Mesozoic Evolution of Western Arizona and Southeastern California

Stephen Reynolds

School of Earth and Space Exploration
Arizona State University



Colorado
Plateau

← Palen

Parker

Buckskin

Wickenburg

Big
Maria

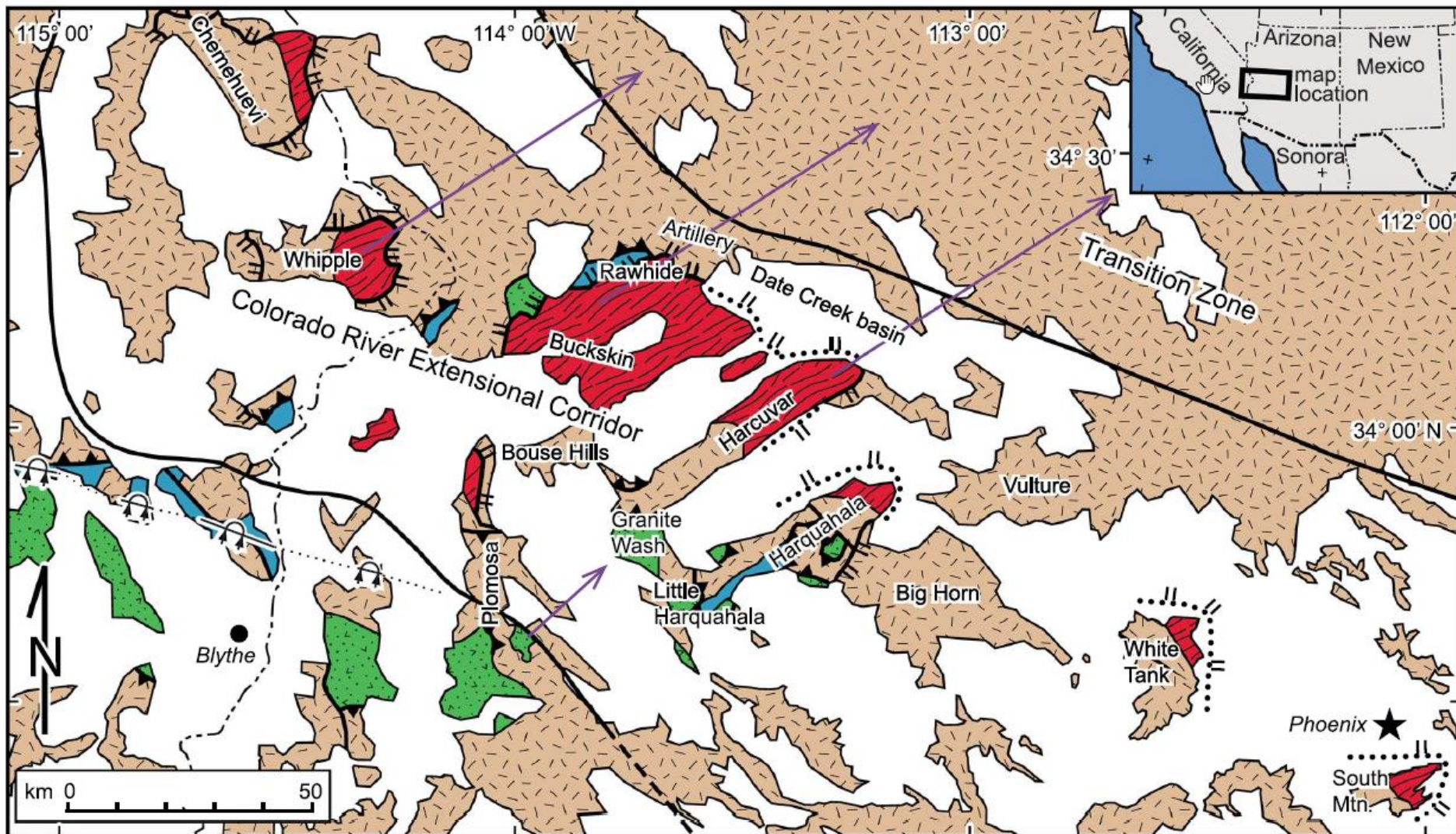
Blythe

Plomosa

Granite
Wash

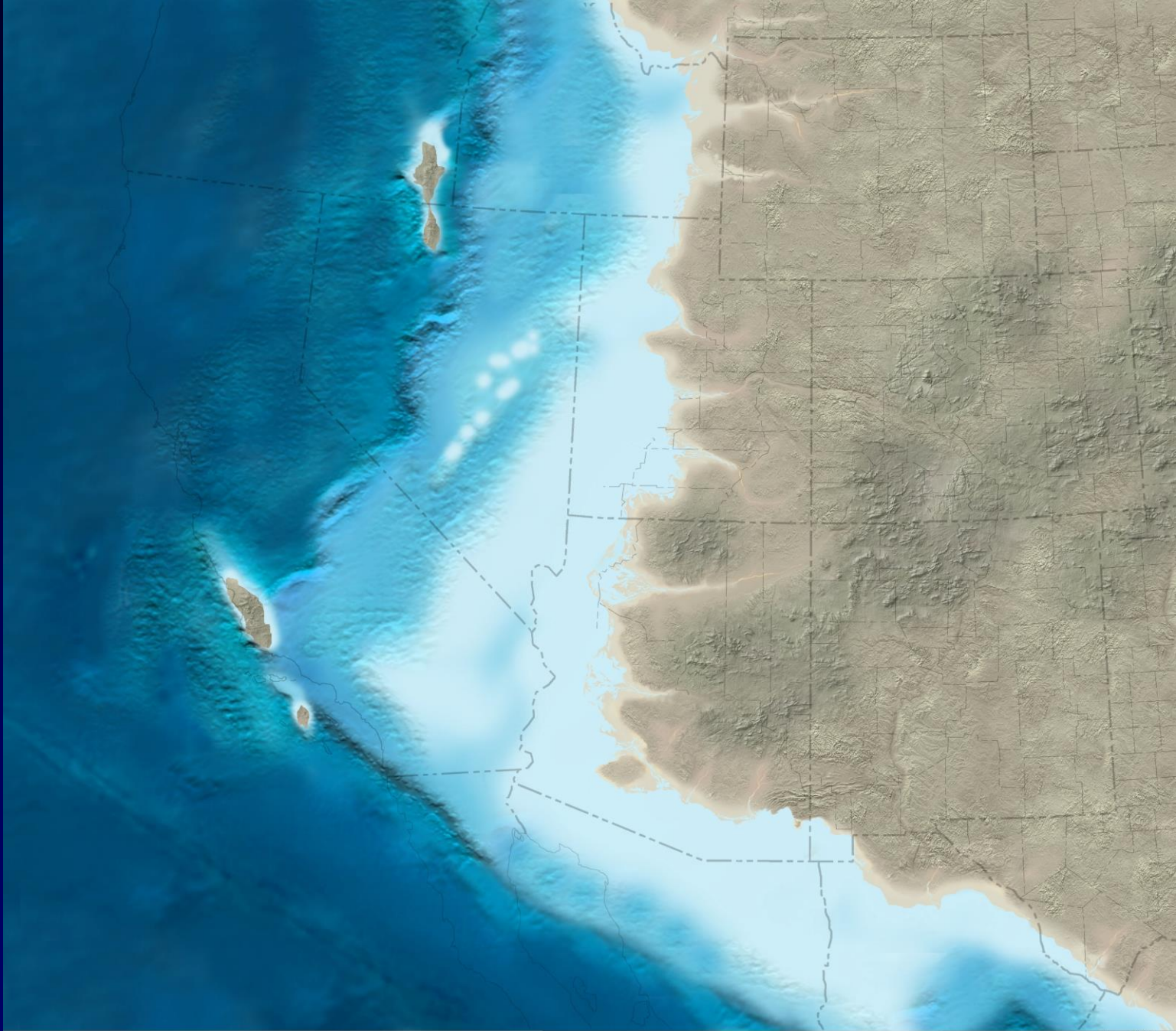
Harquahala

Phoenix →

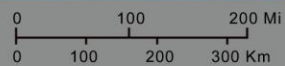


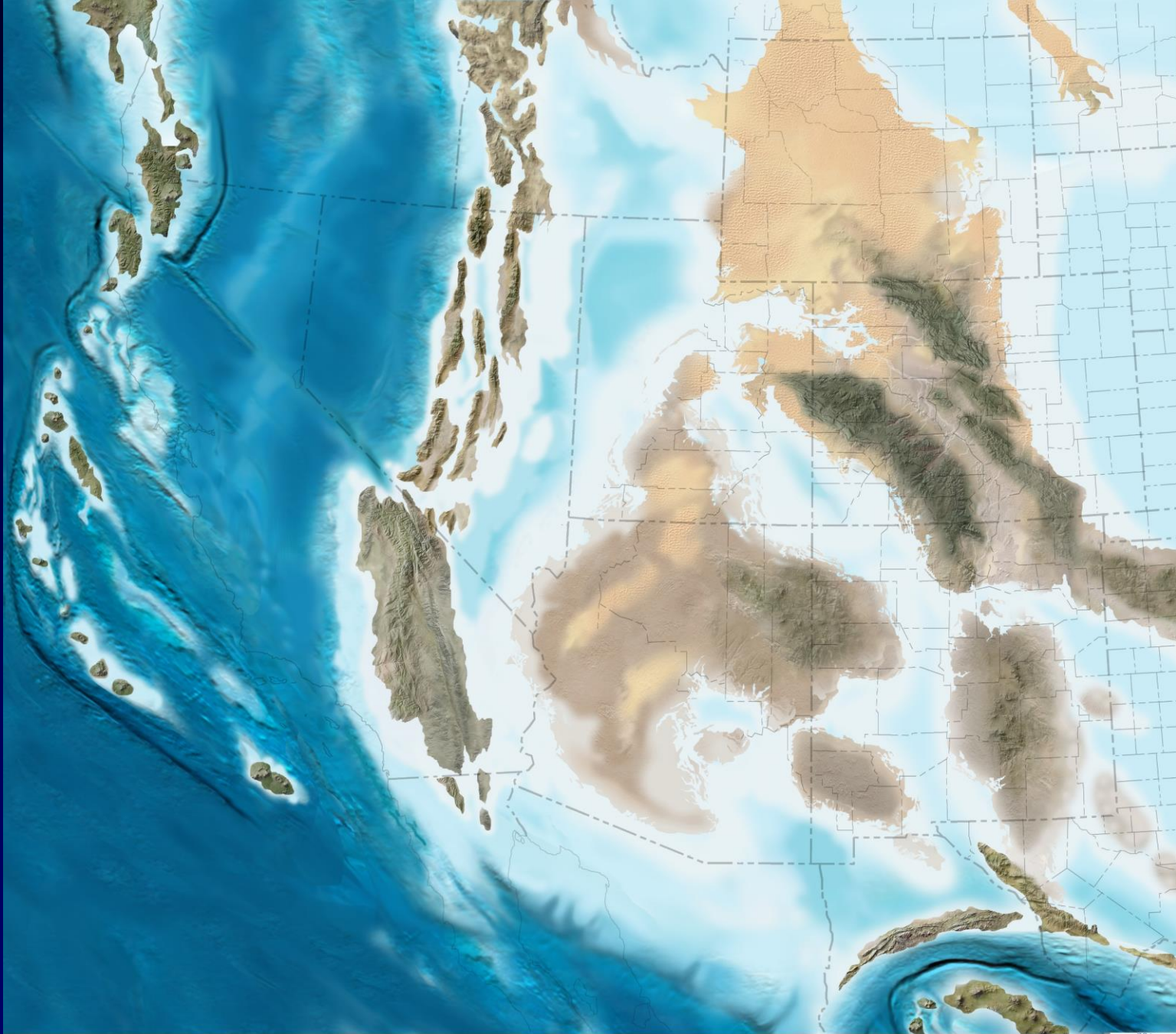
- Mesozoic metasedimentary and metavolcanic rocks
- Paleozoic metasedimentary rocks
- Tertiary to Proterozoic crystalline rocks with Oligocene to Miocene mylonitic fabric
- Bedrock, undivided

- Thrust fault
- Extensional detachment fault
- Buried detachment fault
- Overturned syncline



Early Cambrian
525 Ma (521-542)

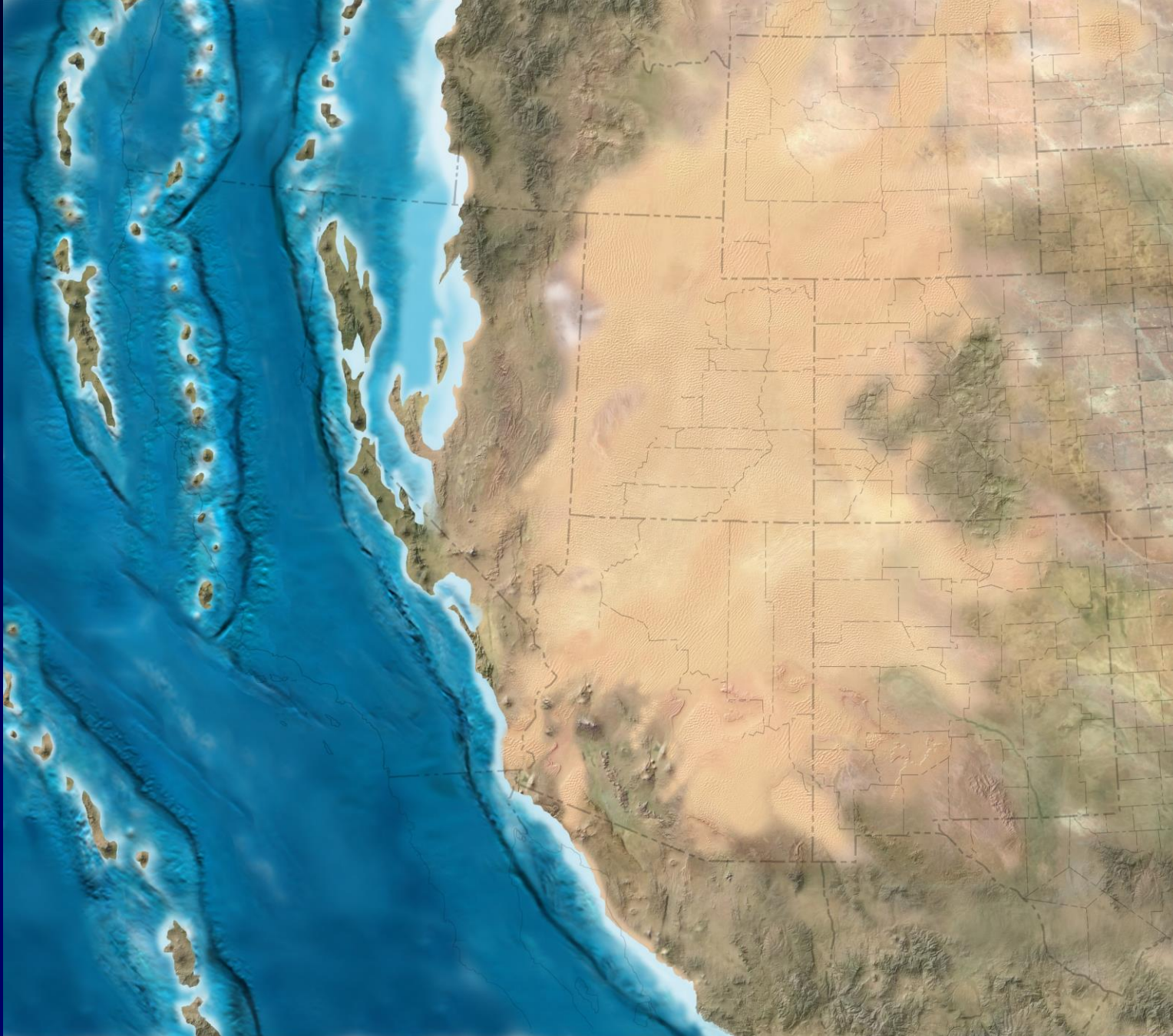




Late Pennsylvanian: Missourian
304 Ma (306-303)

0 100 200 Mi
0 100 200 300 Km





Early Jurassic
180 Ma (176-183)

0 100 200 Mi
0 100 200 300 Km







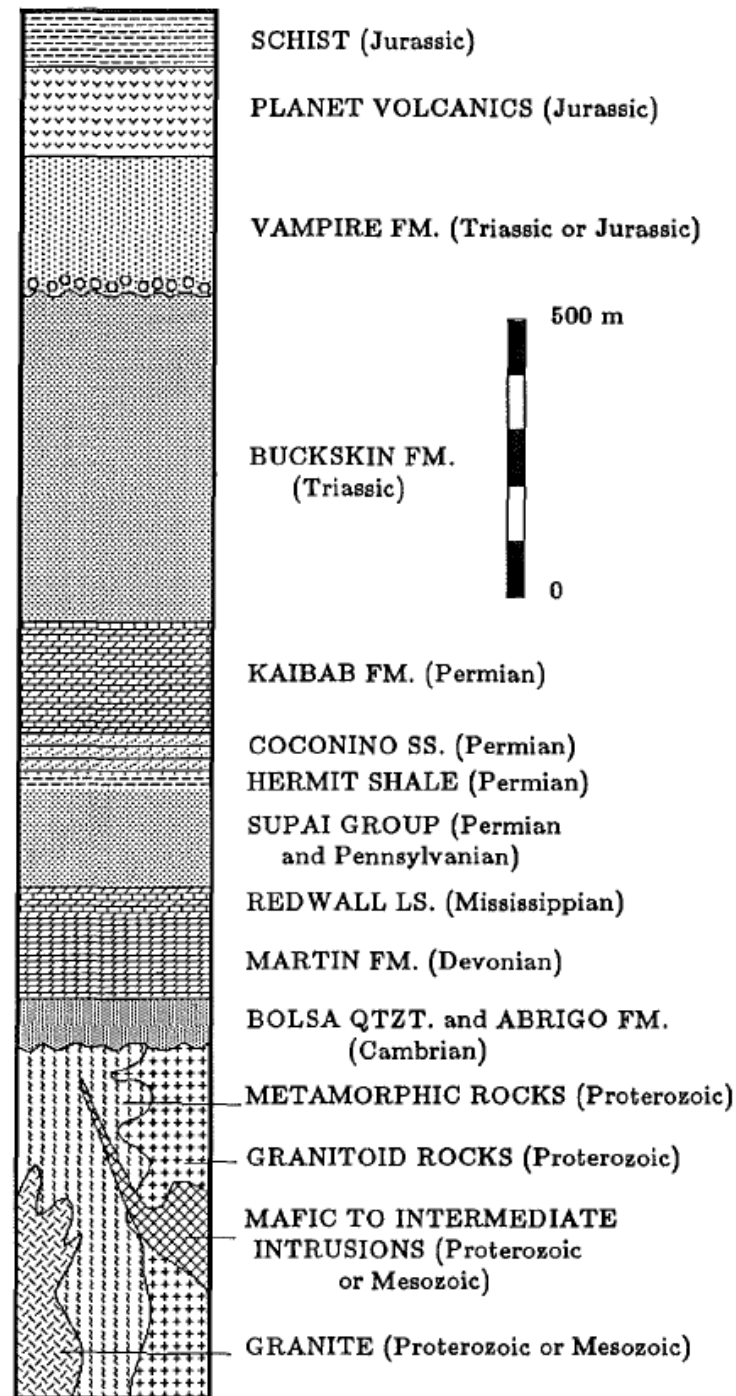
Mid-Cenozoic Units


Vampire
Formation

Upper Buckskin

Phyllite Member

Lower Buckskin



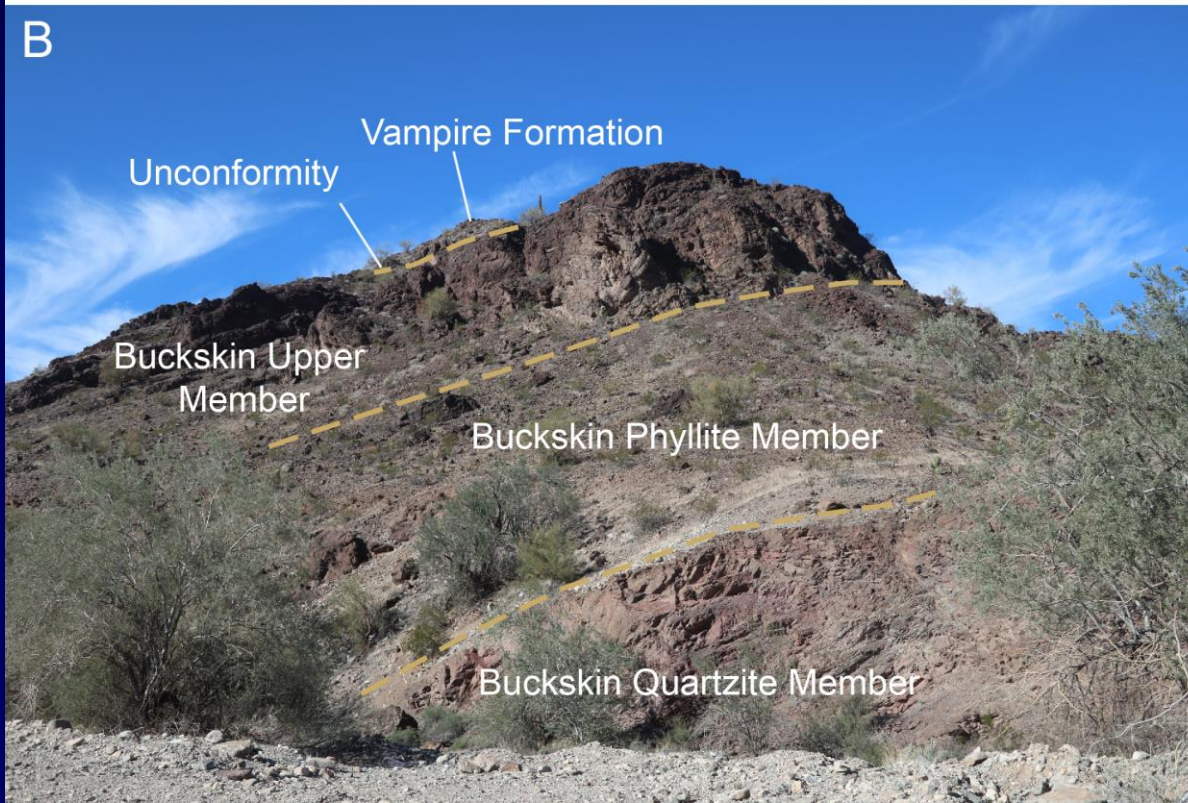
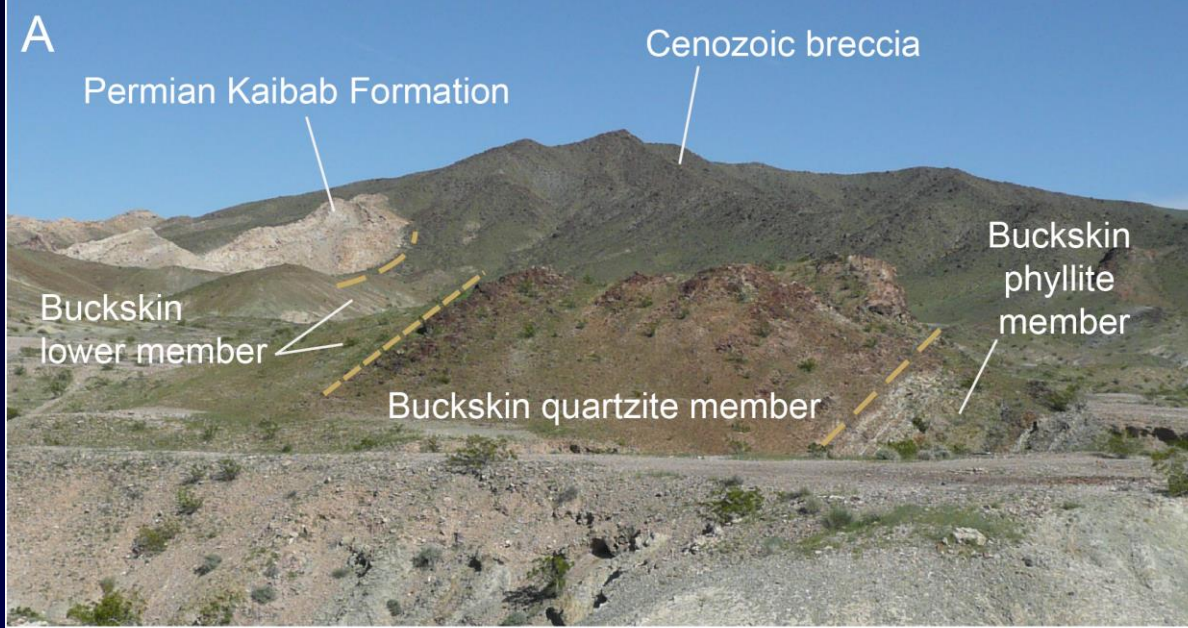


Glen Canyon Group

Chinle

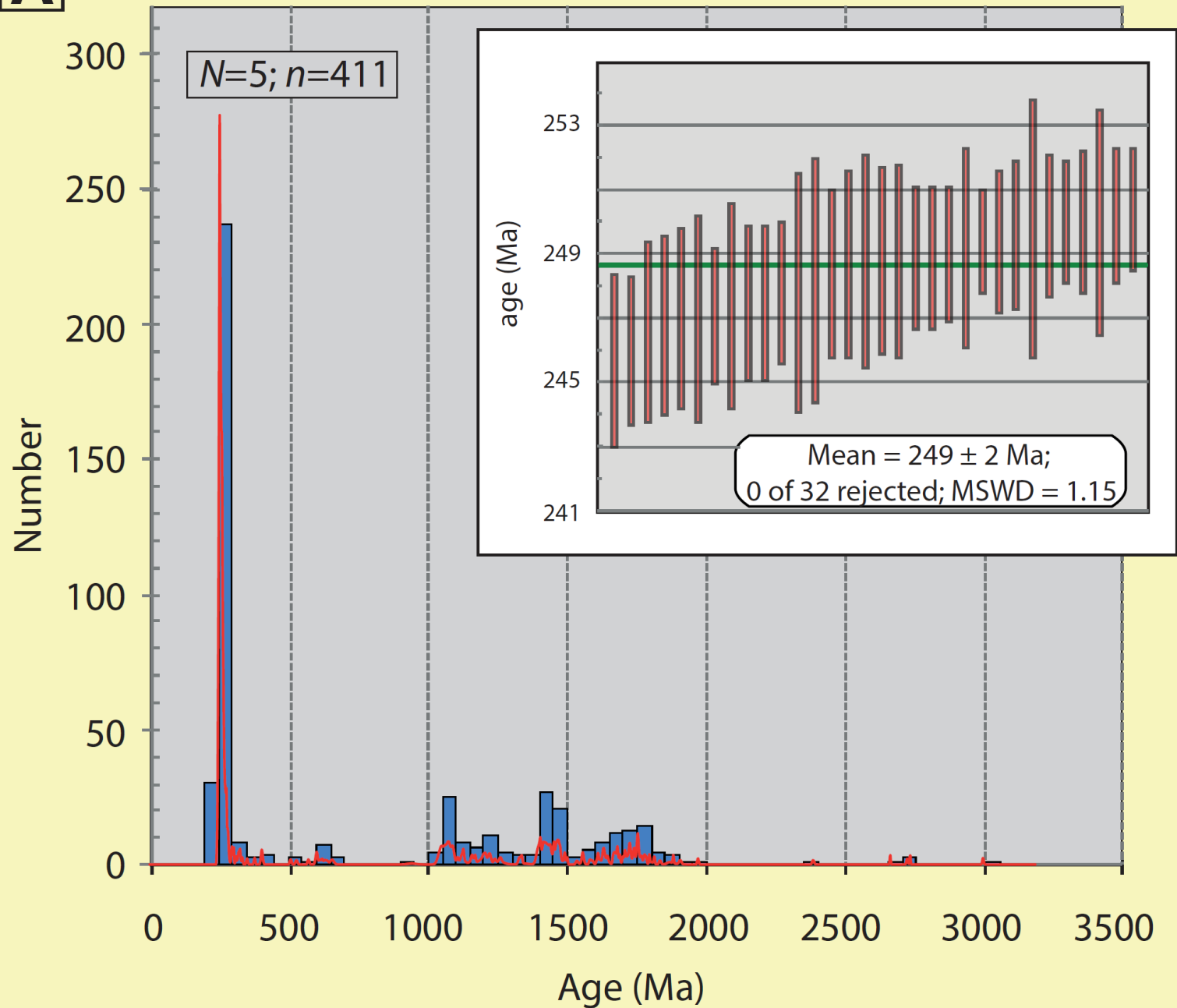
Moenkopi





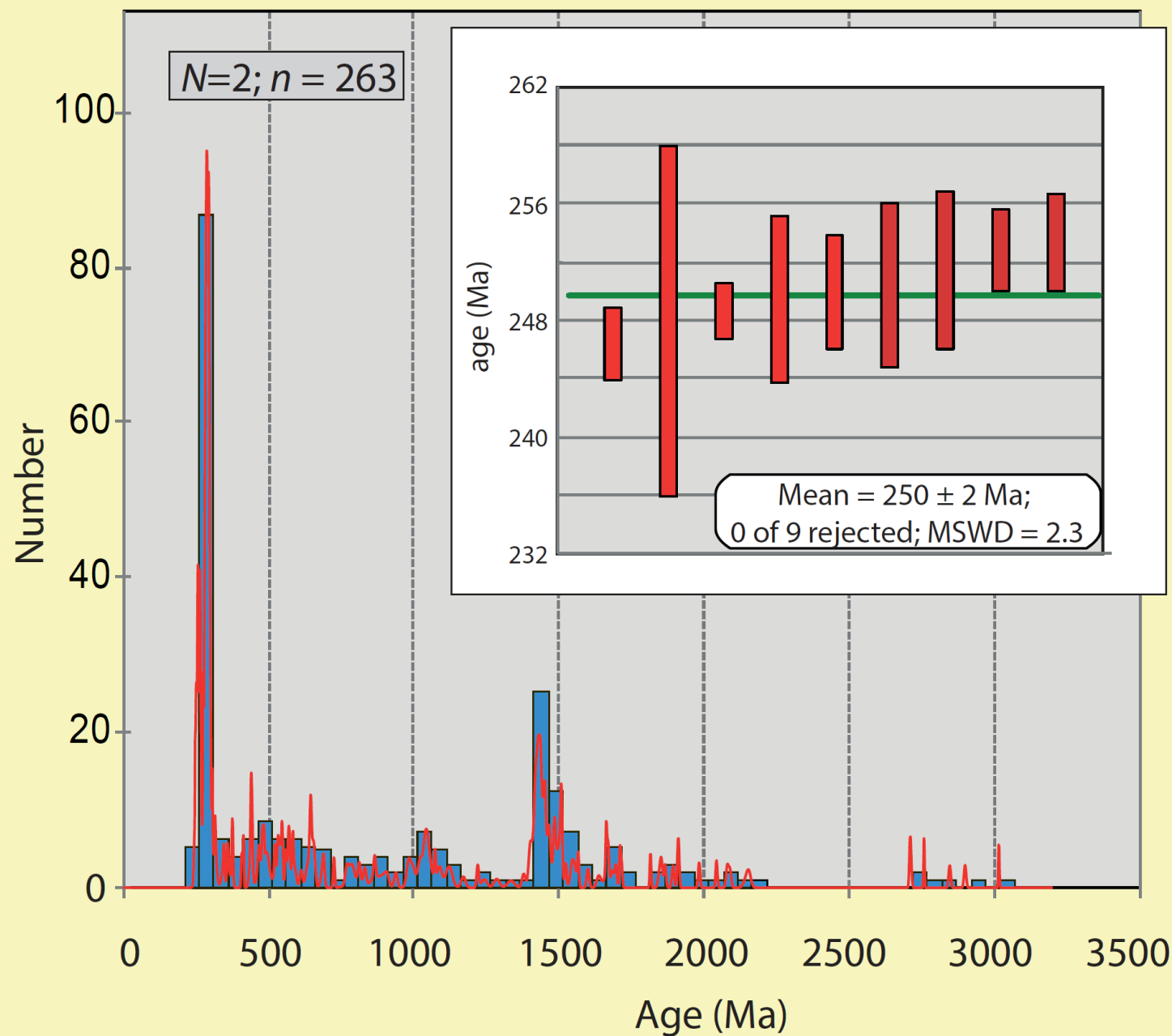
A

Basal lower member, Buckskin Fm



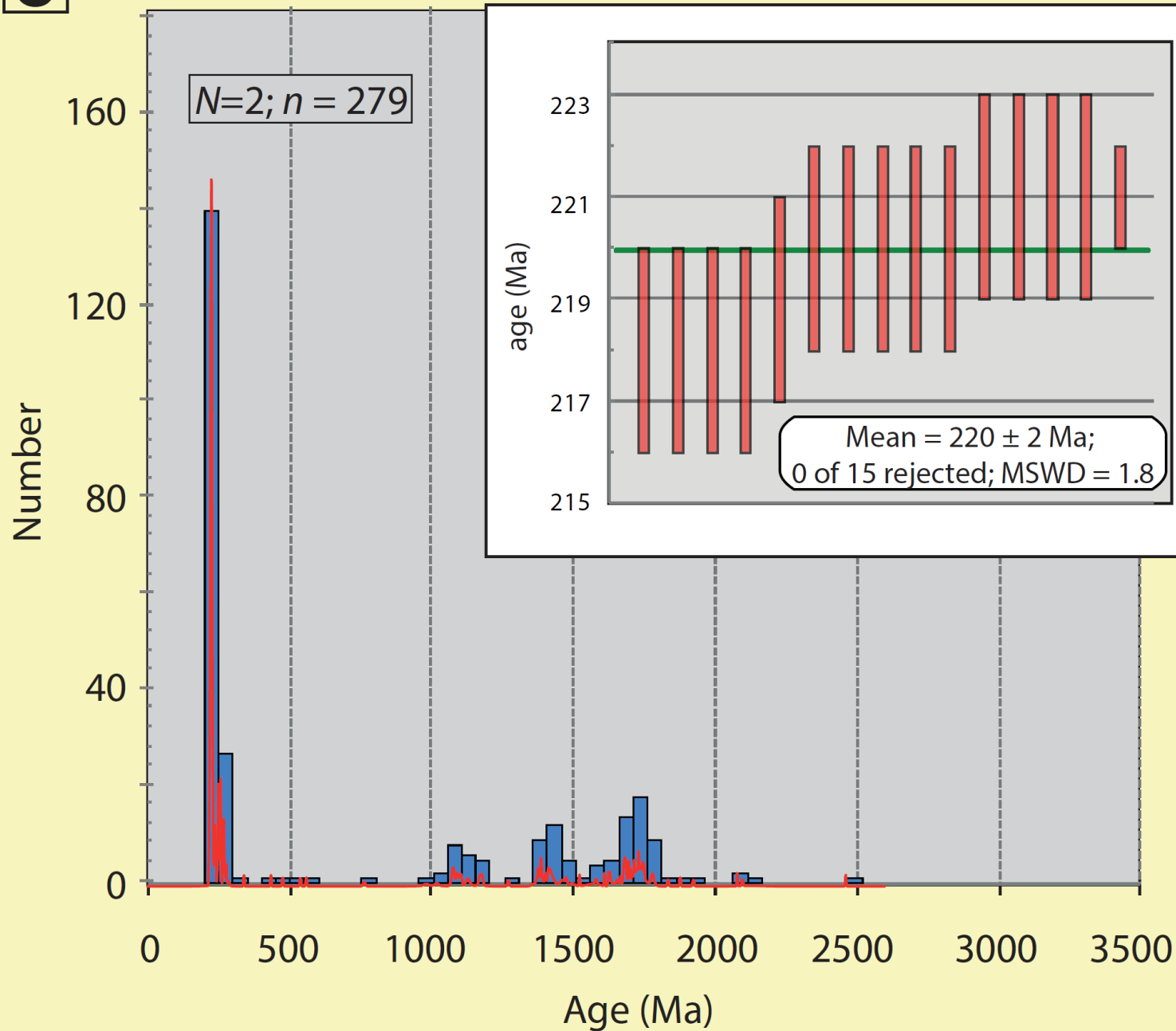
F

Holbrook Member, Moenkopi Fm

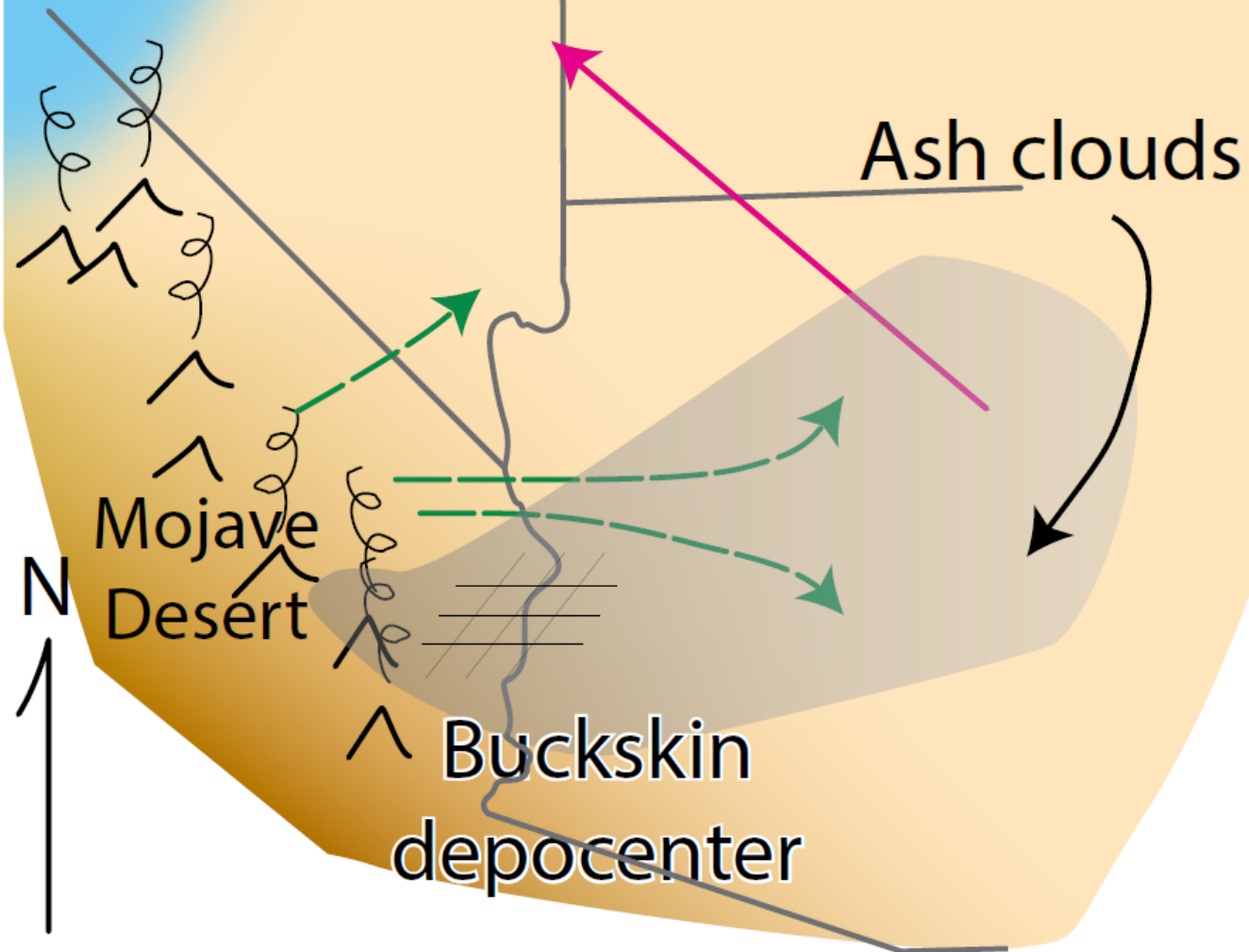


C

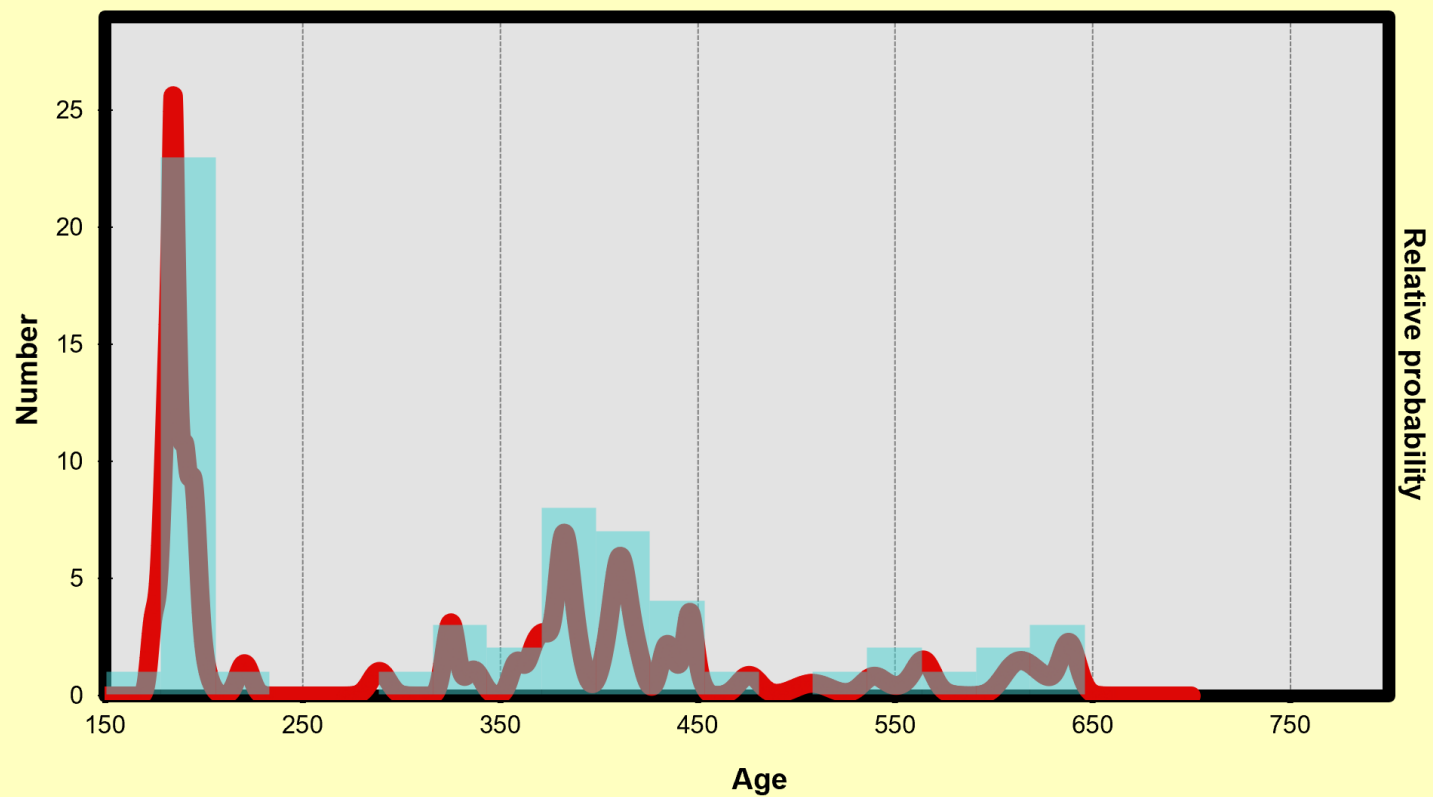
Phyllite member, Buckskin Fm



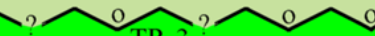


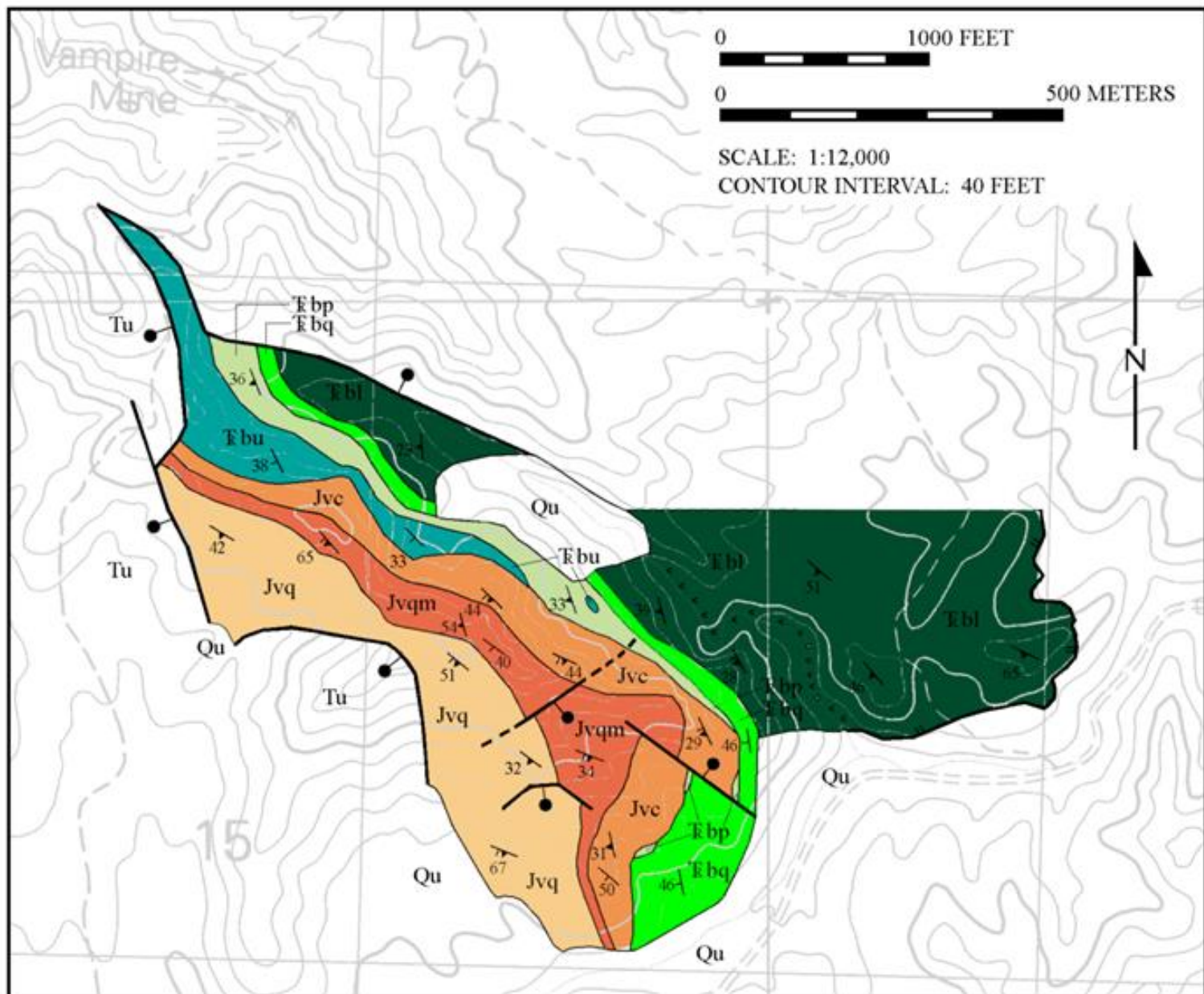
ca. 225-220 Ma



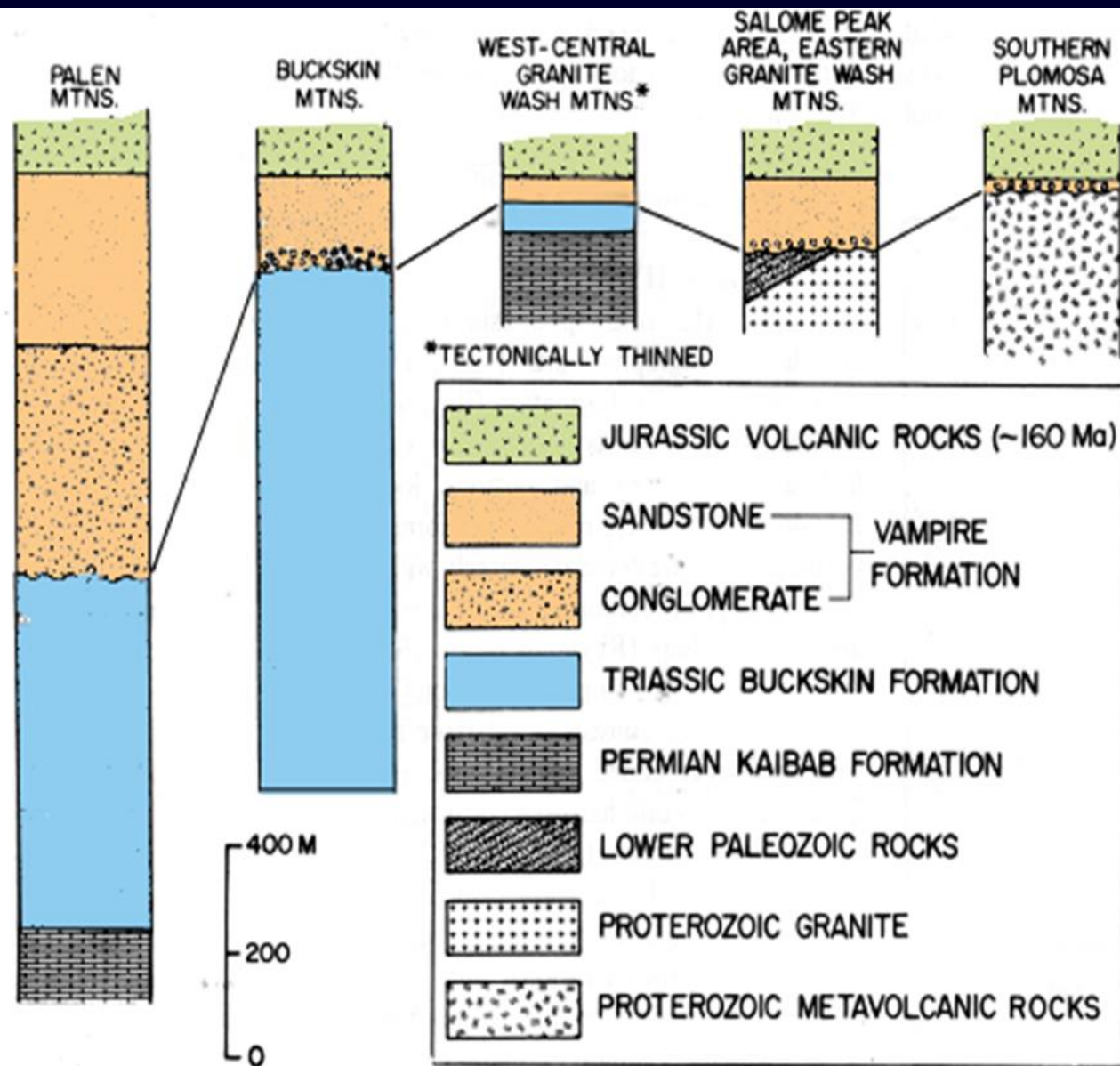




AGE	COLORADO PLATEAU		WEST-CENTRAL ARIZONA & SOUTHEASTERN CALIFORNIA	
MIDDLE JURASSIC	SAN RAFAEL GROUP	Entrada Sandstone(?)	DOME ROCK SEQUENCE	Lava Flows, Hypabyssal Intrusions, and Tuffs (Planet Volcanics)
		Carmel Formation*		
		Page Sandstone*		
		J-2 Temple Cap Sandstone*		
EARLY JURASSIC	GLEN CANYON GROUP	J-1 Navajo Sandstone	VAMPIRE FM.	Quartzite Member  Calcareous Facies
		undivided Moenave/ Kayenta Formation		Micaceous Facies
		J-0		Metaconglomerate Member
LATE TRIASSIC	CHINLE FM.	Upper Part (Owl Rock/Church Rock)	BUCKSKIN FORMATION	 J-0 Upper Member
		Lower Part* (Shinarump/Petrified Forest)		Phyllite Member*
EARLY TRIASSIC	MOENKOPI FM.	TR-3		 TR-3 Quartzite Member
		Red-bed Siltstones, Gypsiferous Siltstones, and Limestones		Lower Member









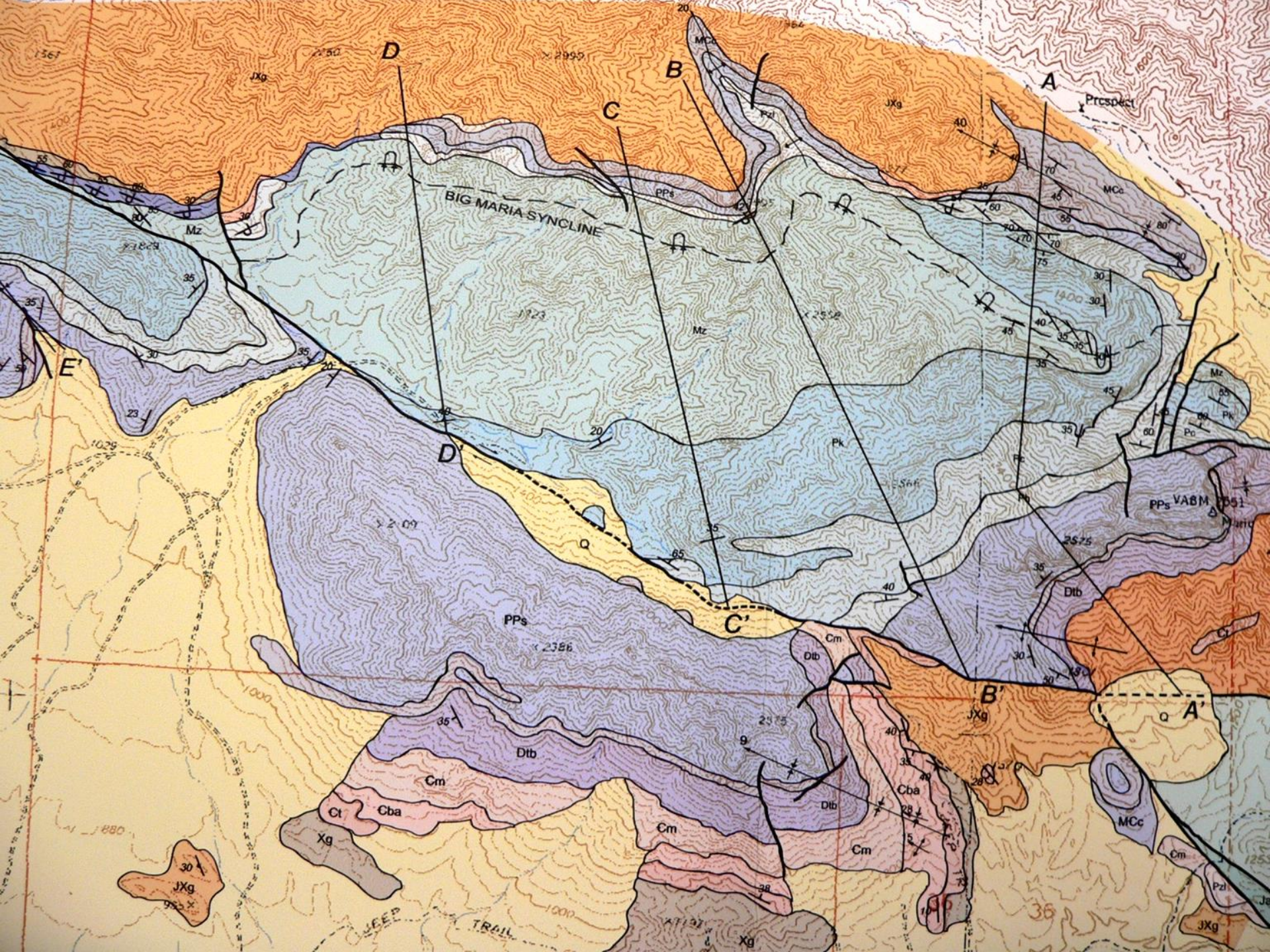


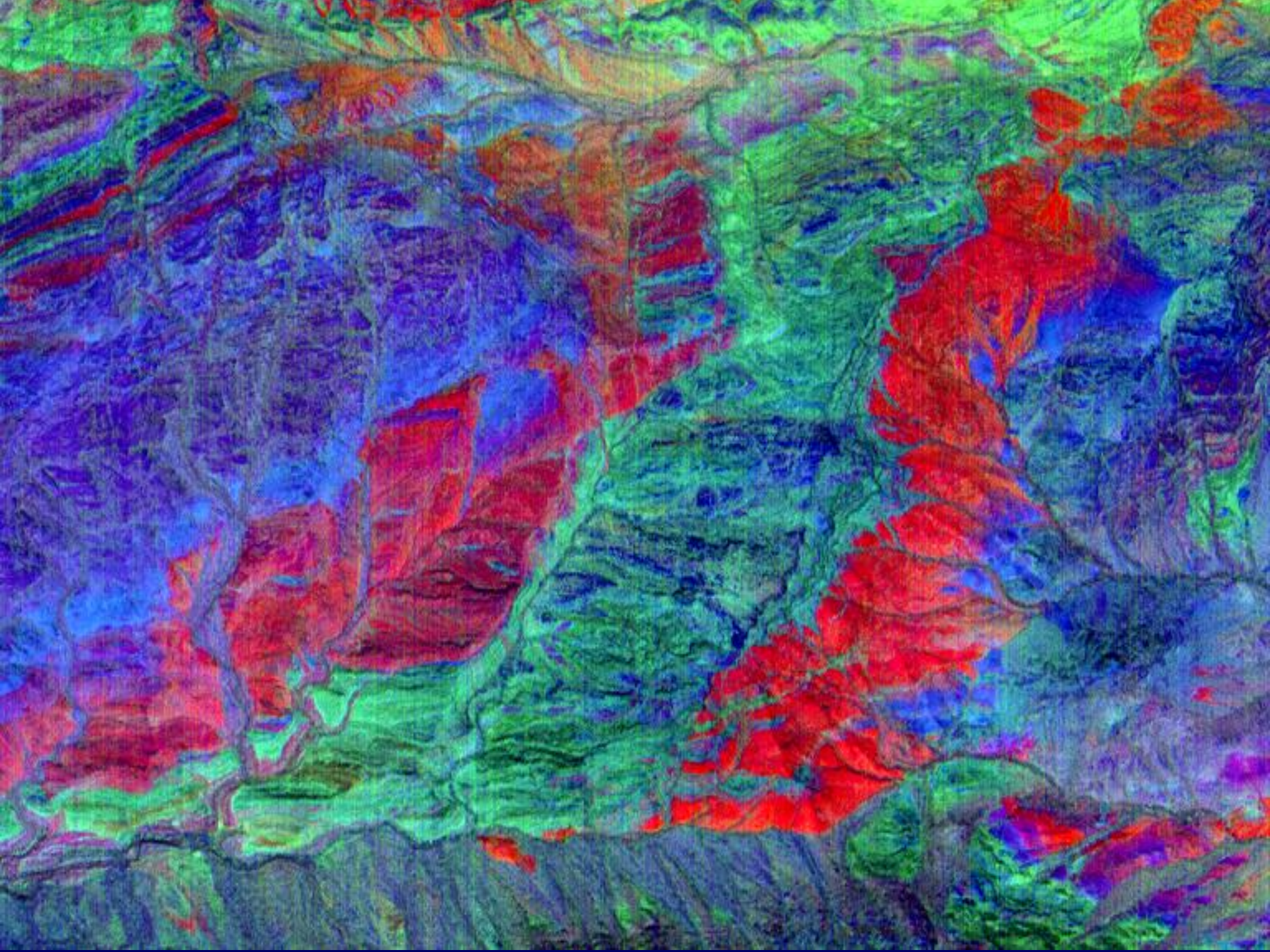


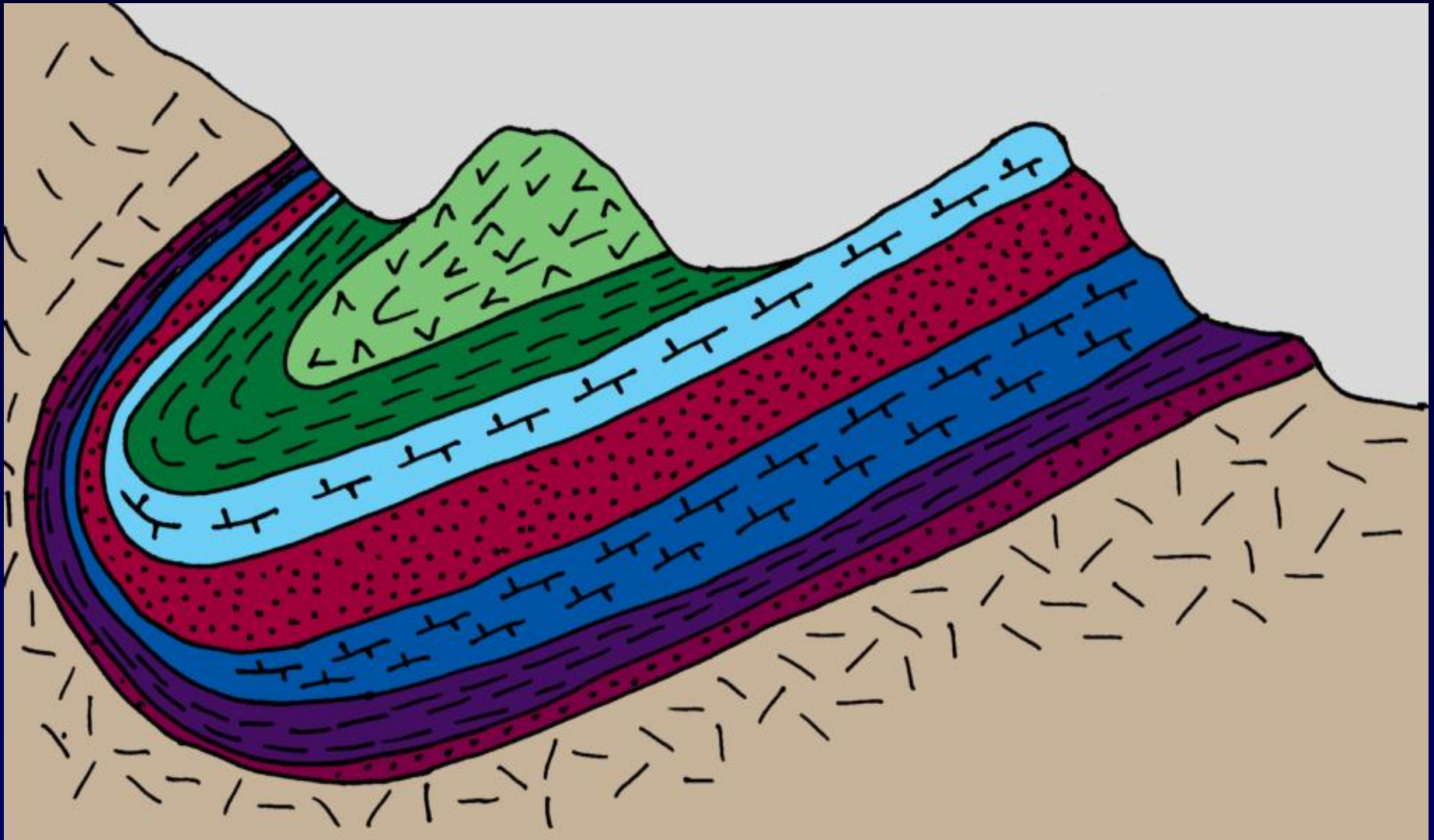




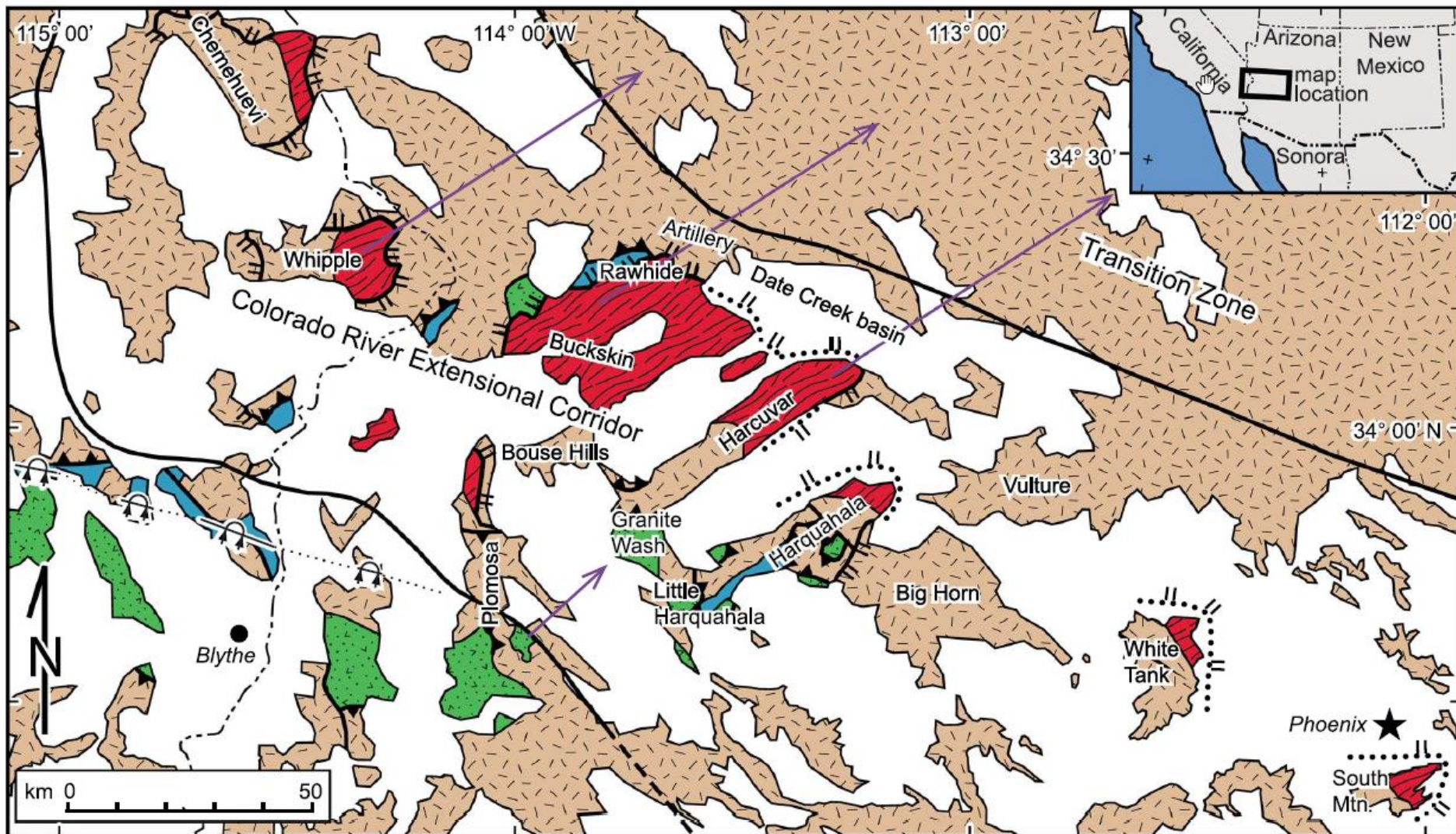






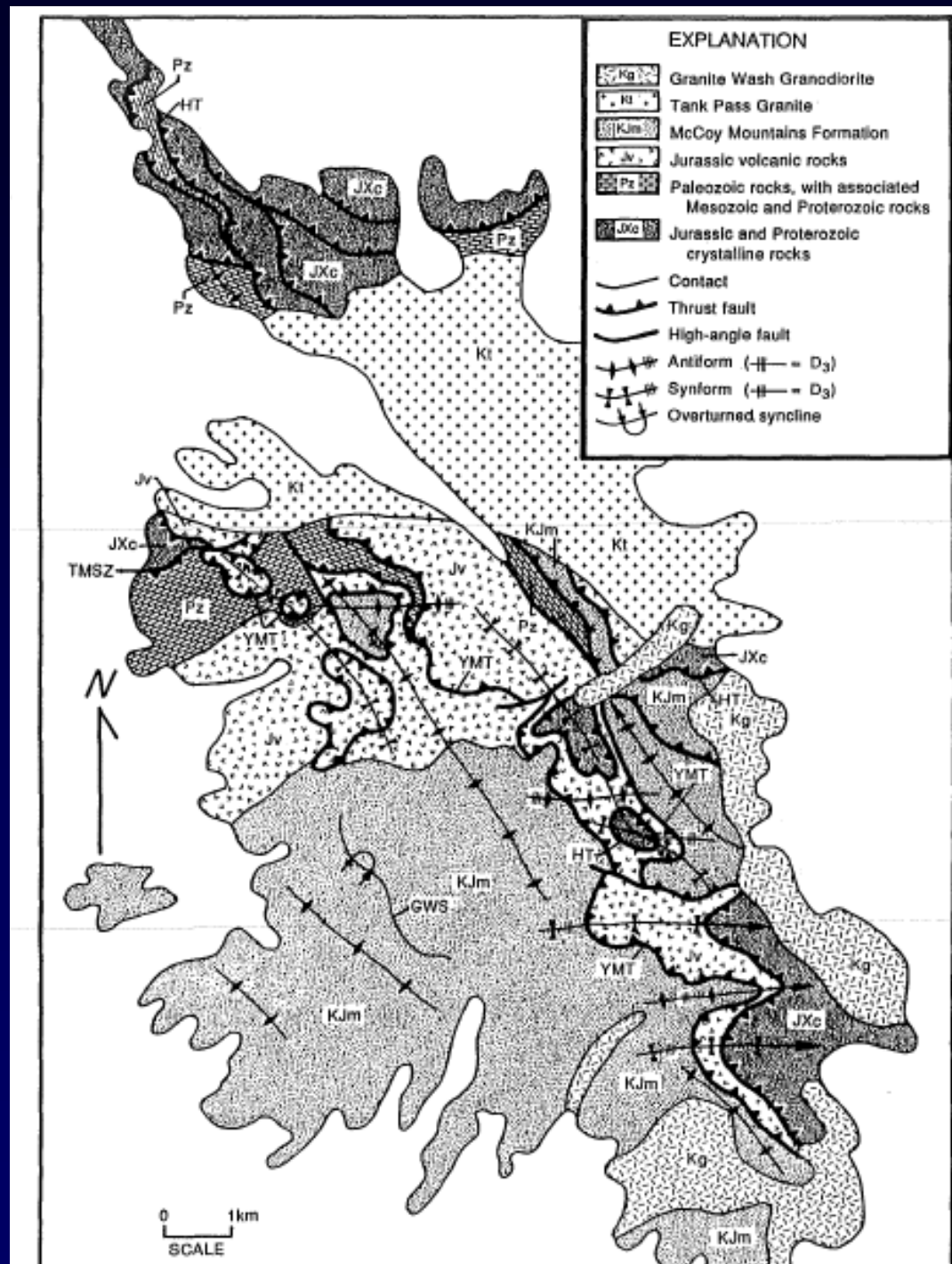


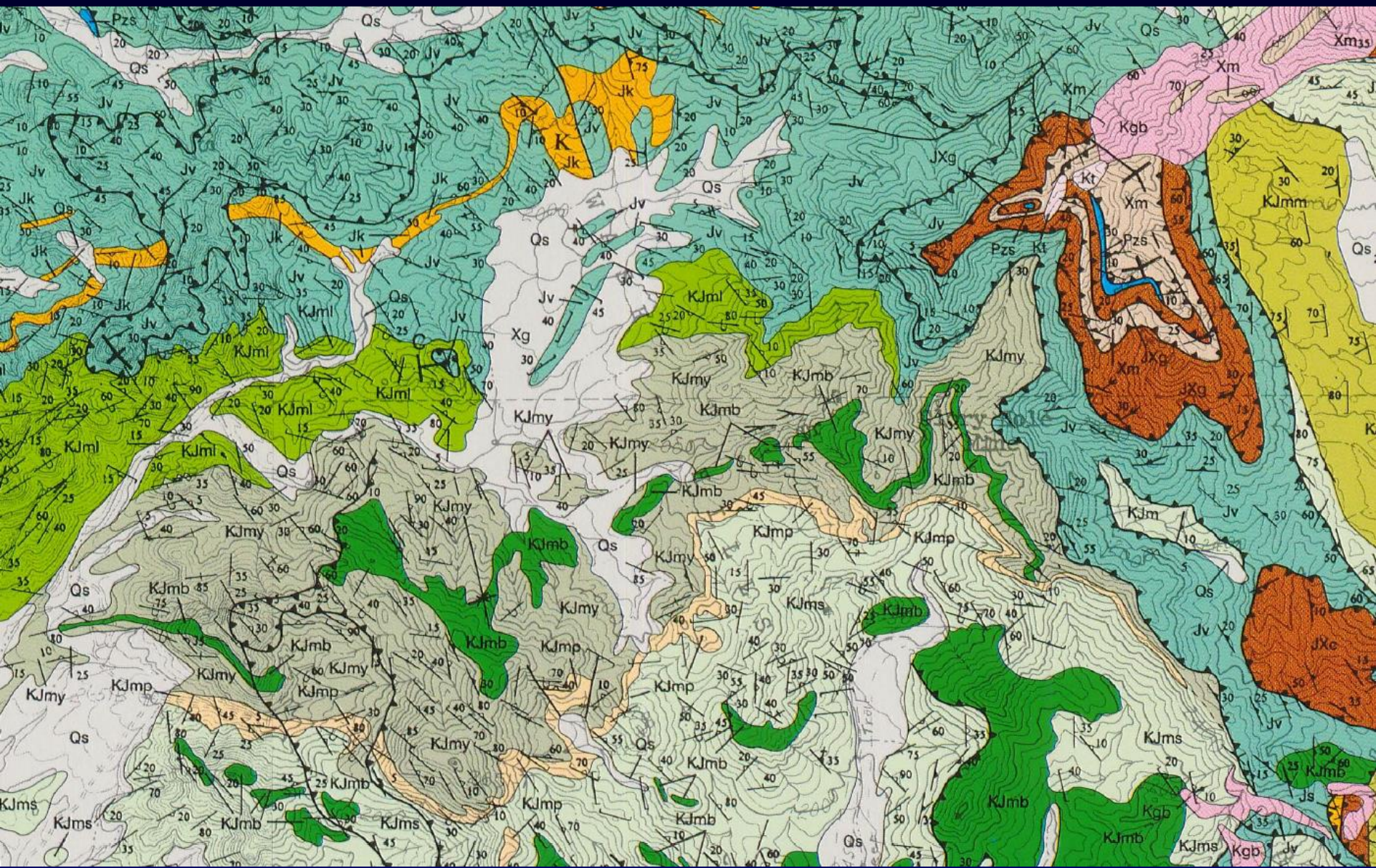


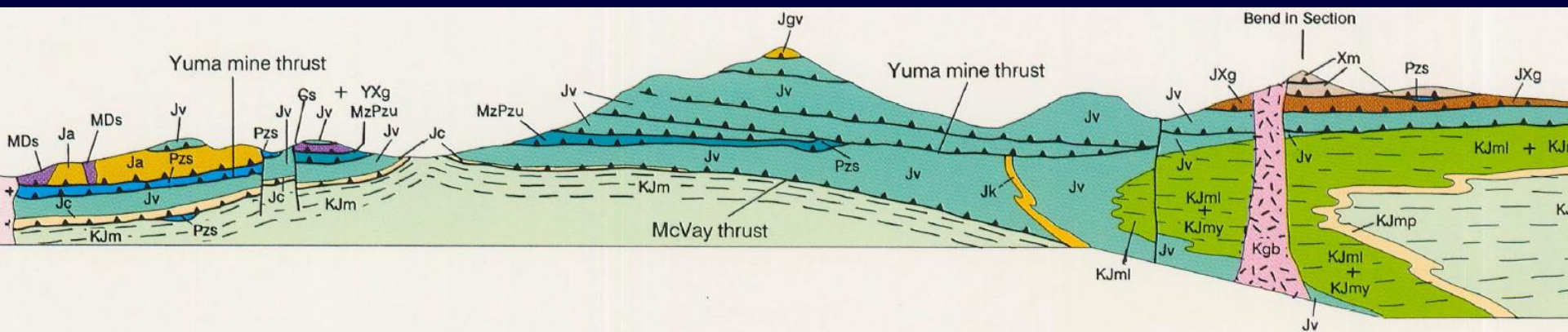


- Mesozoic metasedimentary and metavolcanic rocks
- Paleozoic metasedimentary rocks
- Tertiary to Proterozoic crystalline rocks with Oligocene to Miocene mylonitic fabric
- Bedrock, undivided

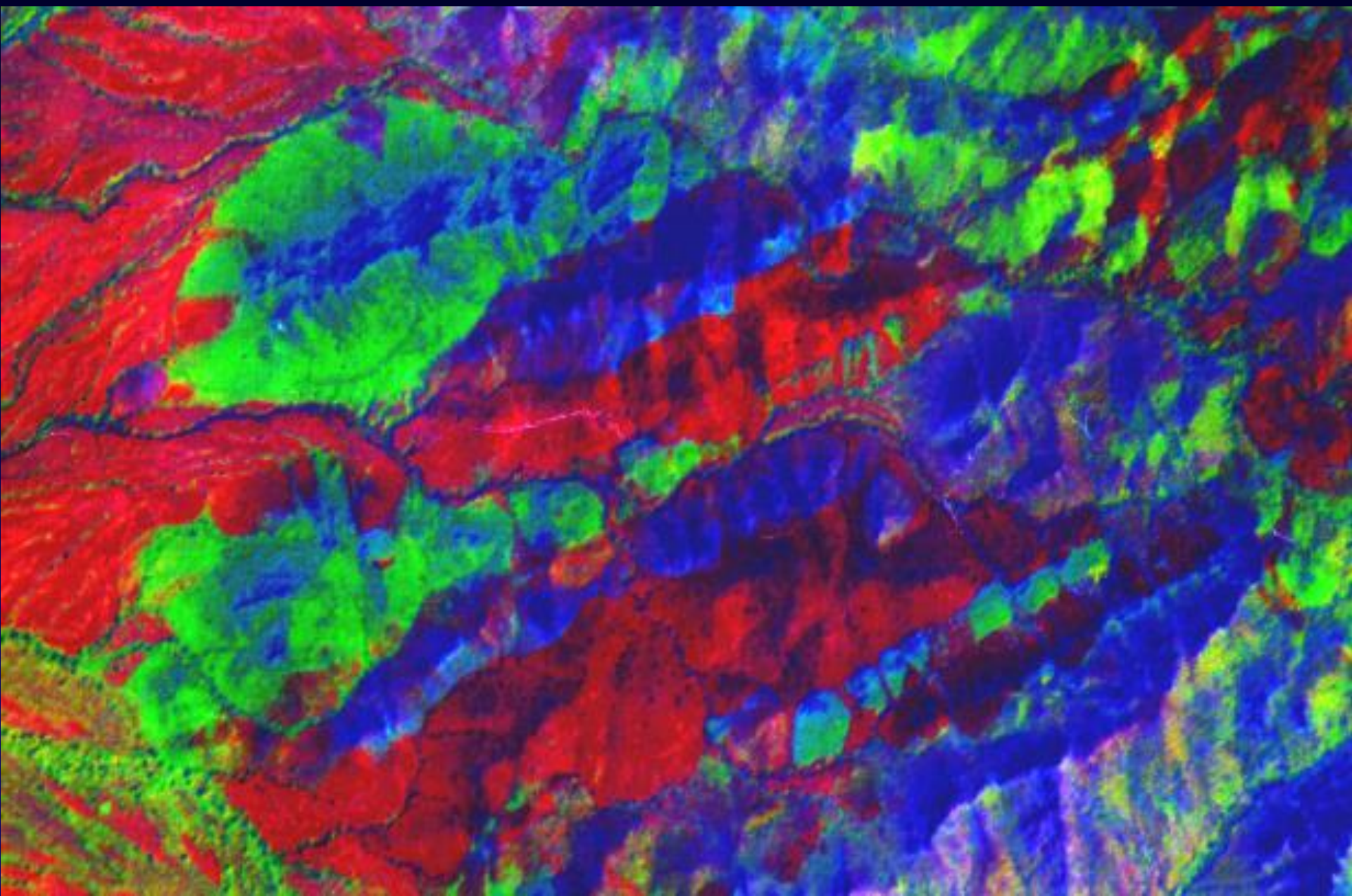
- Thrust fault
- Extensional detachment fault
- Buried detachment fault
- Overturned syncline

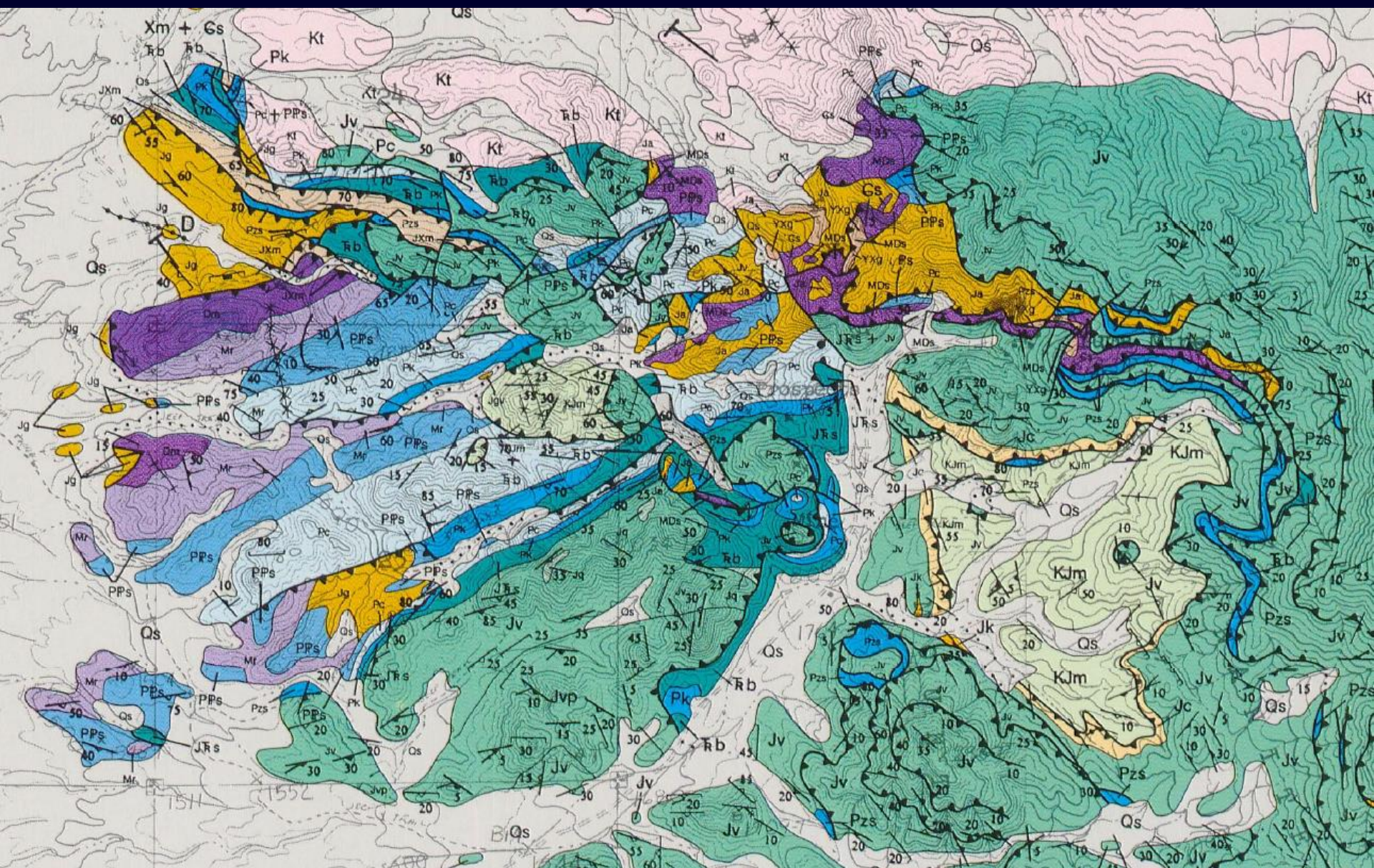


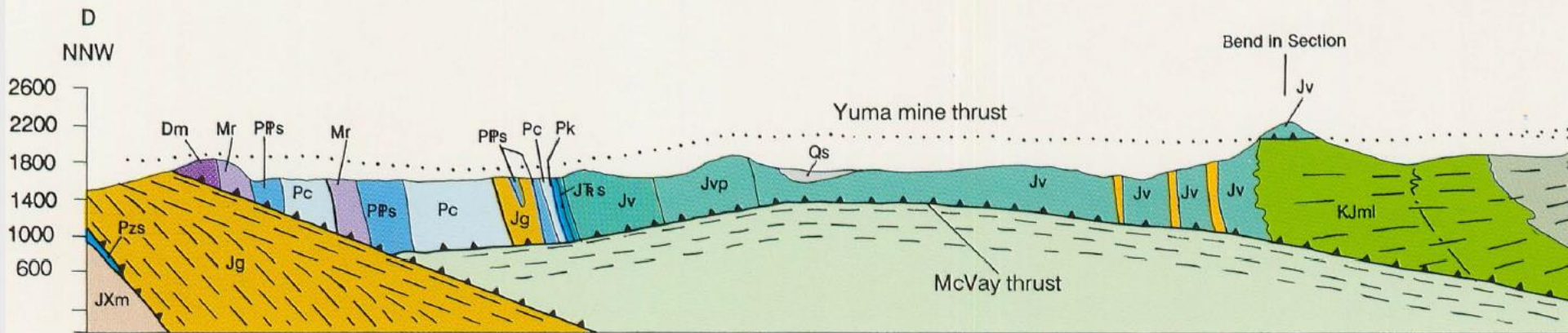


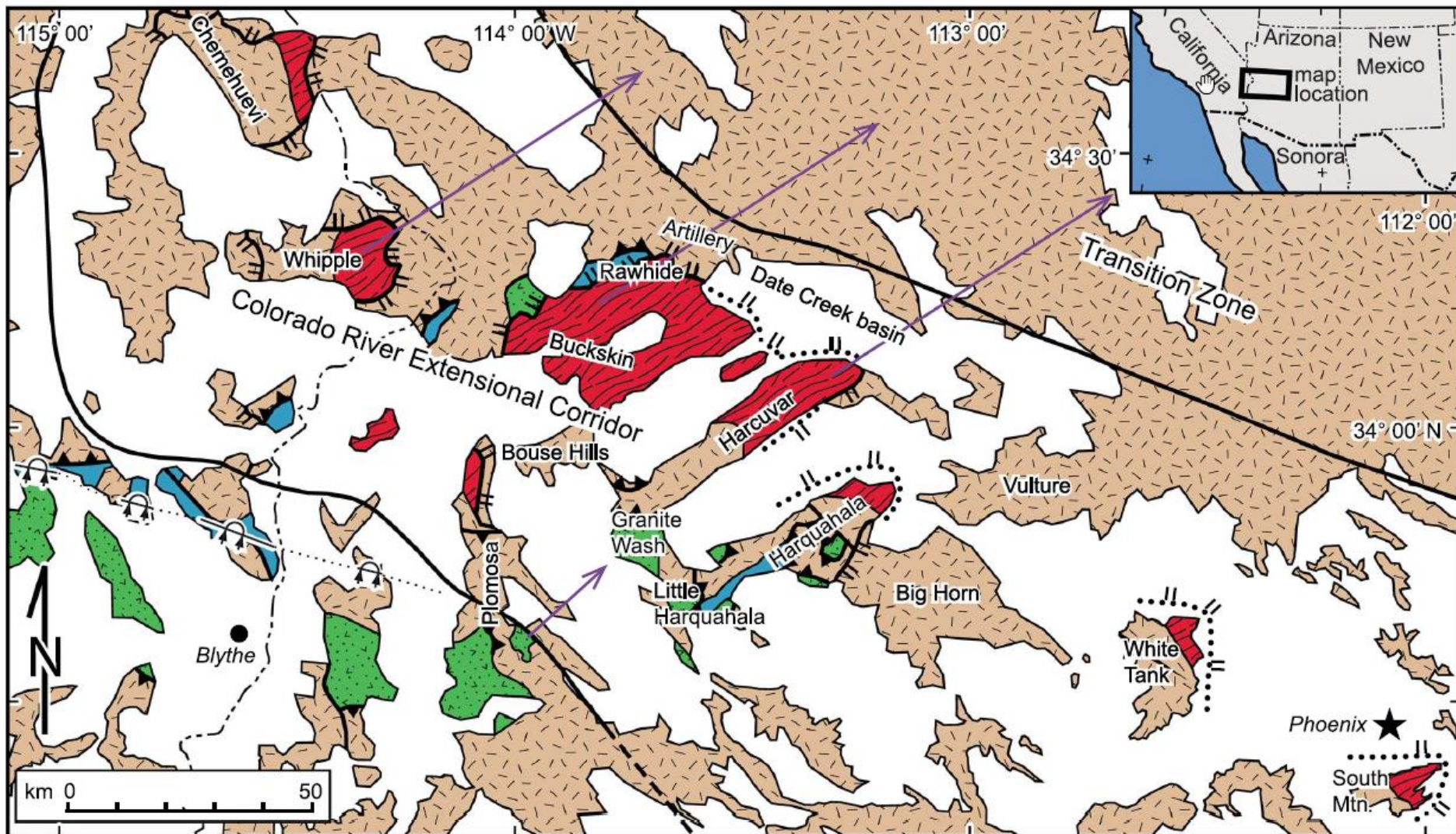












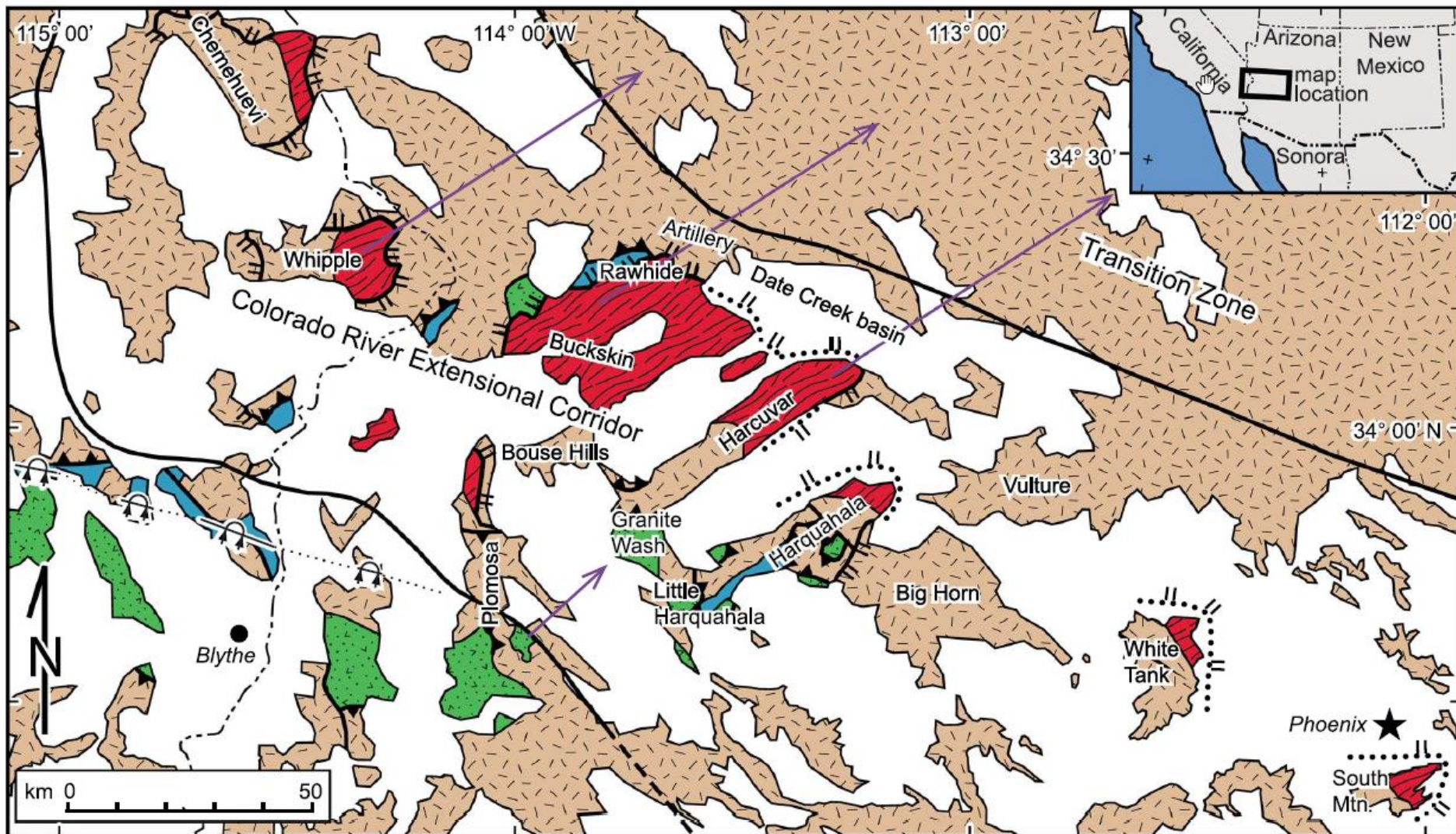
- Mesozoic metasedimentary and metavolcanic rocks
- Paleozoic metasedimentary rocks
- Tertiary to Proterozoic crystalline rocks with Oligocene to Miocene mylonitic fabric
- Bedrock, undivided

- Thrust fault
- Extensional detachment fault
- Buried detachment fault
- Overturned syncline









- Mesozoic metasedimentary and metavolcanic rocks
- Paleozoic metasedimentary rocks
- Tertiary to Proterozoic crystalline rocks with Oligocene to Miocene mylonitic fabric
- Bedrock, undivided

- Thrust fault
- Extensional detachment fault
- Buried detachment fault
- Overturned syncline





Colorado
Plateau

← Palen

Parker

Buckskin

Wickenburg

Big
Maria

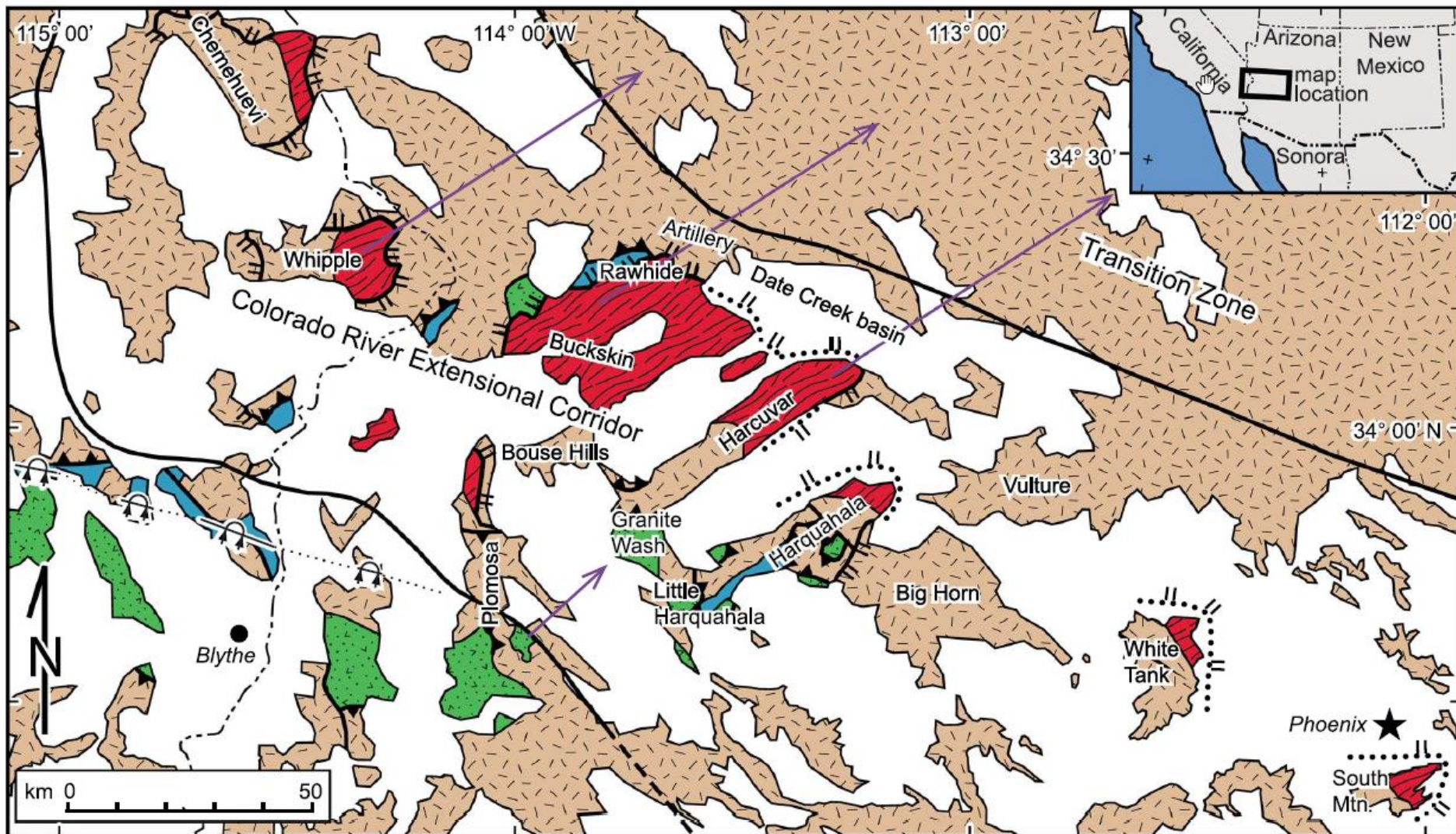
Granite
Wash

Plomosa

Harquahala

Blythe

Phoenix →



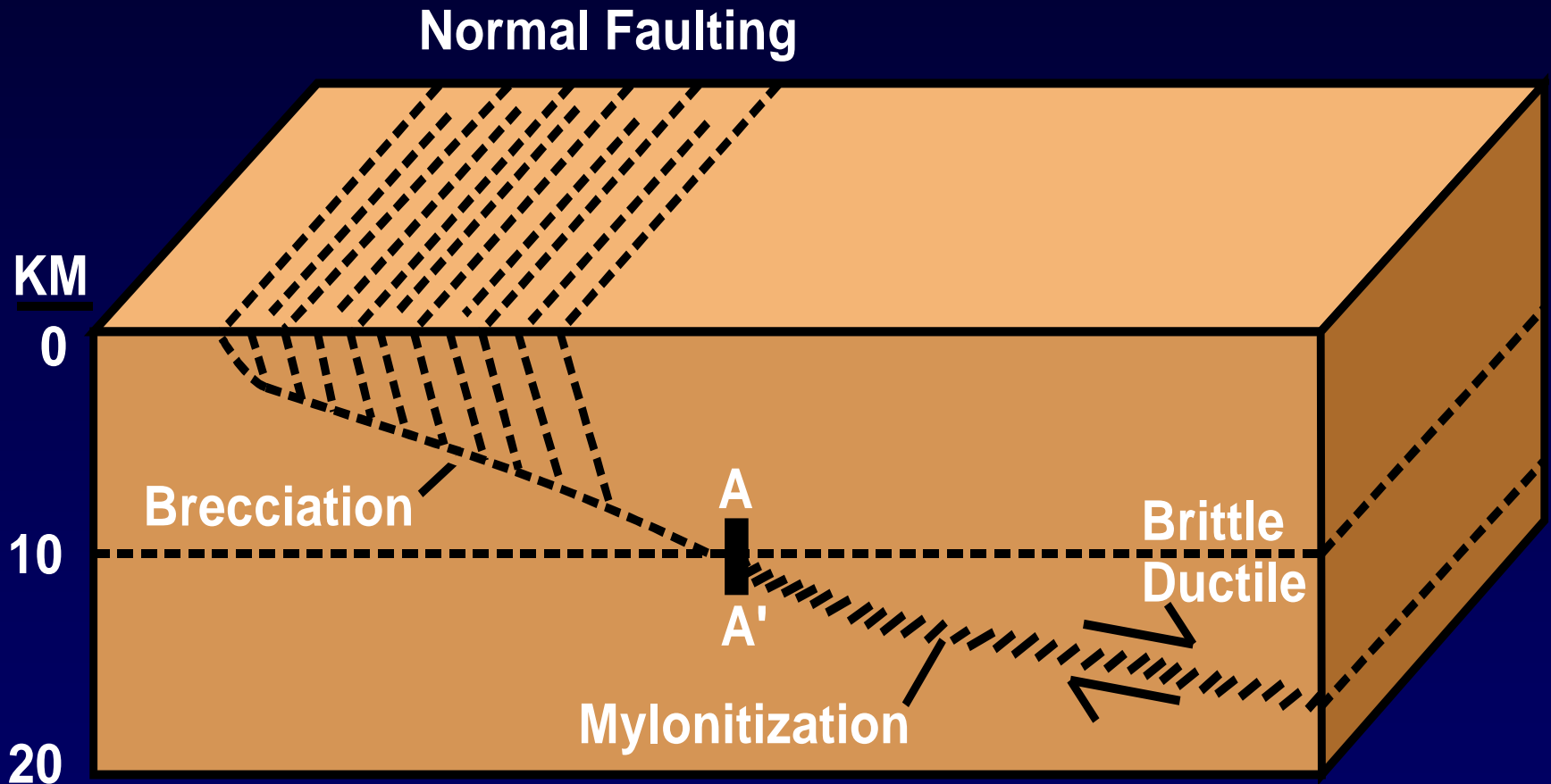
- Mesozoic metasedimentary and metavolcanic rocks
- Paleozoic metasedimentary rocks
- Tertiary to Proterozoic crystalline rocks with Oligocene to Miocene mylonitic fabric
- Bedrock, undivided

- Thrust fault
- Extensional detachment fault
- Buried detachment fault
- Overturned syncline

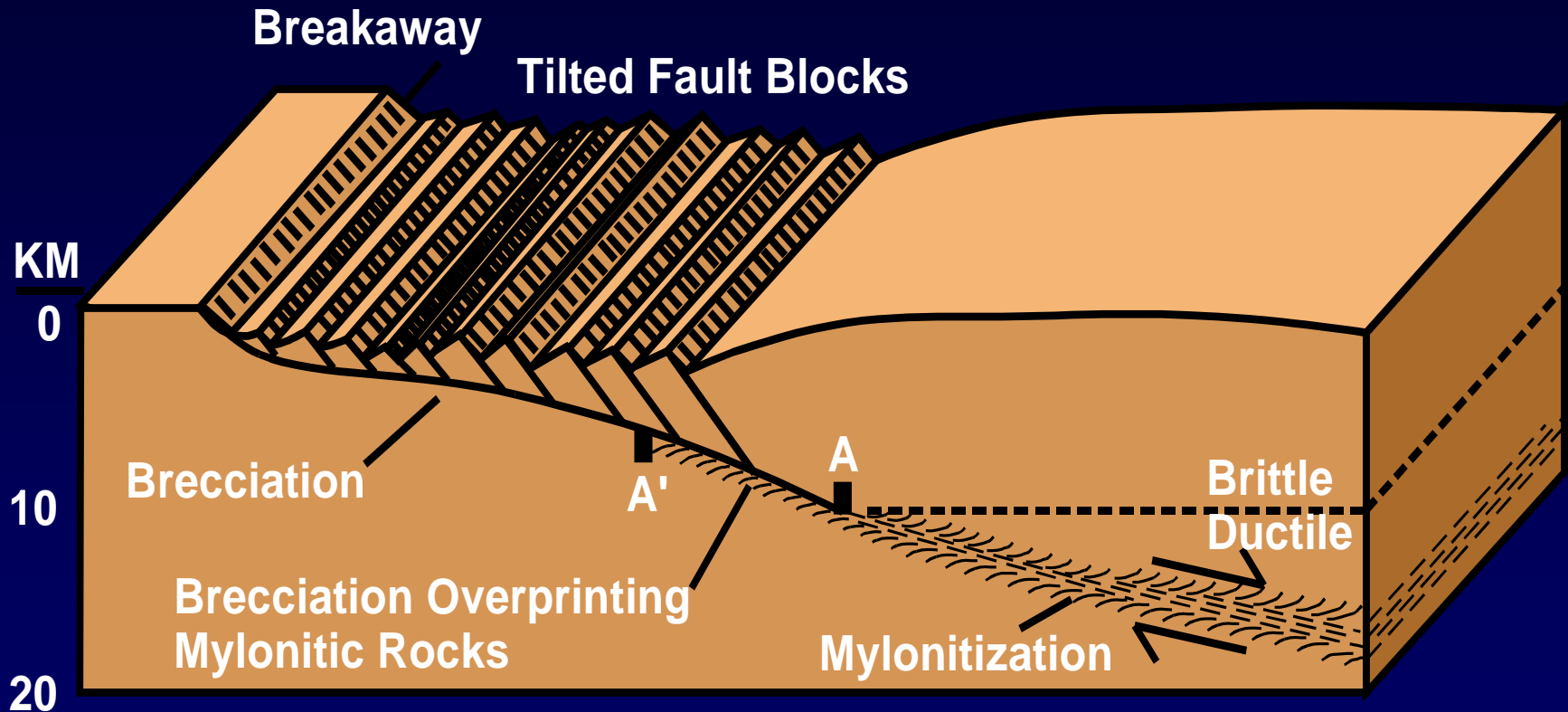




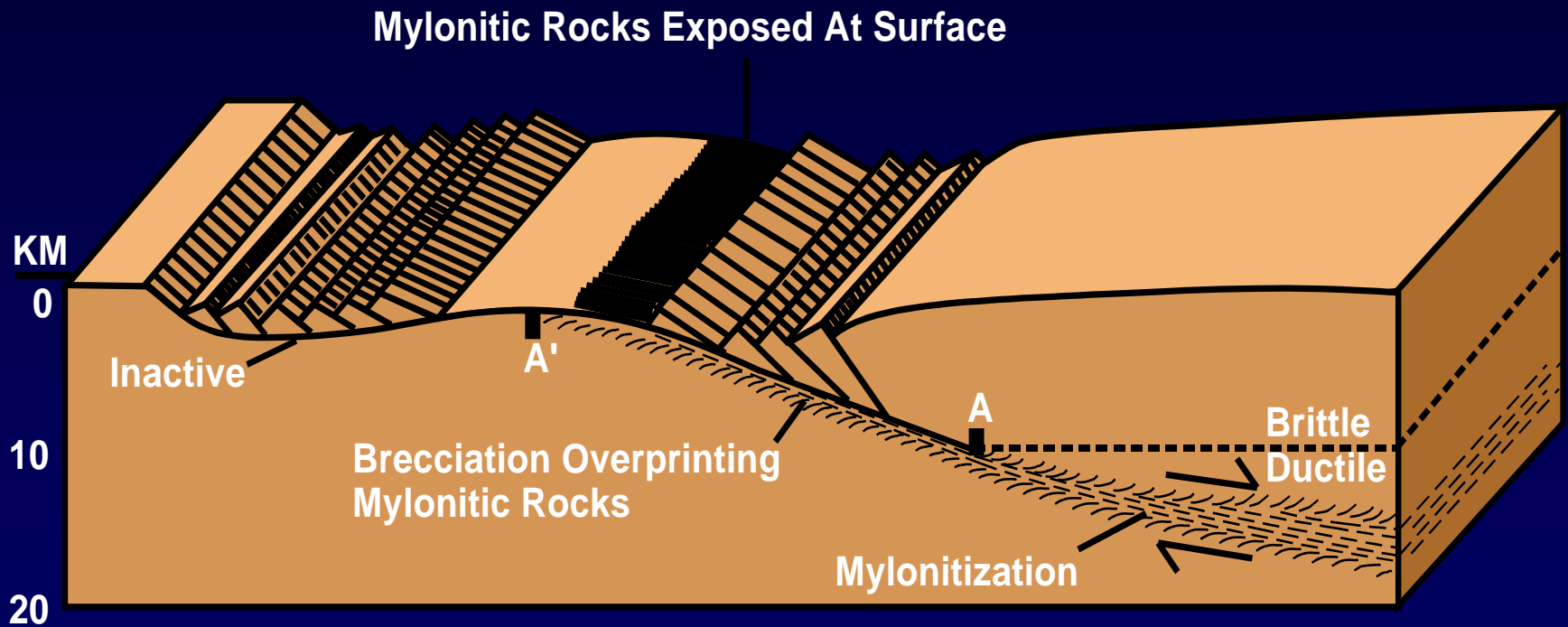
Core Complex Evolution I

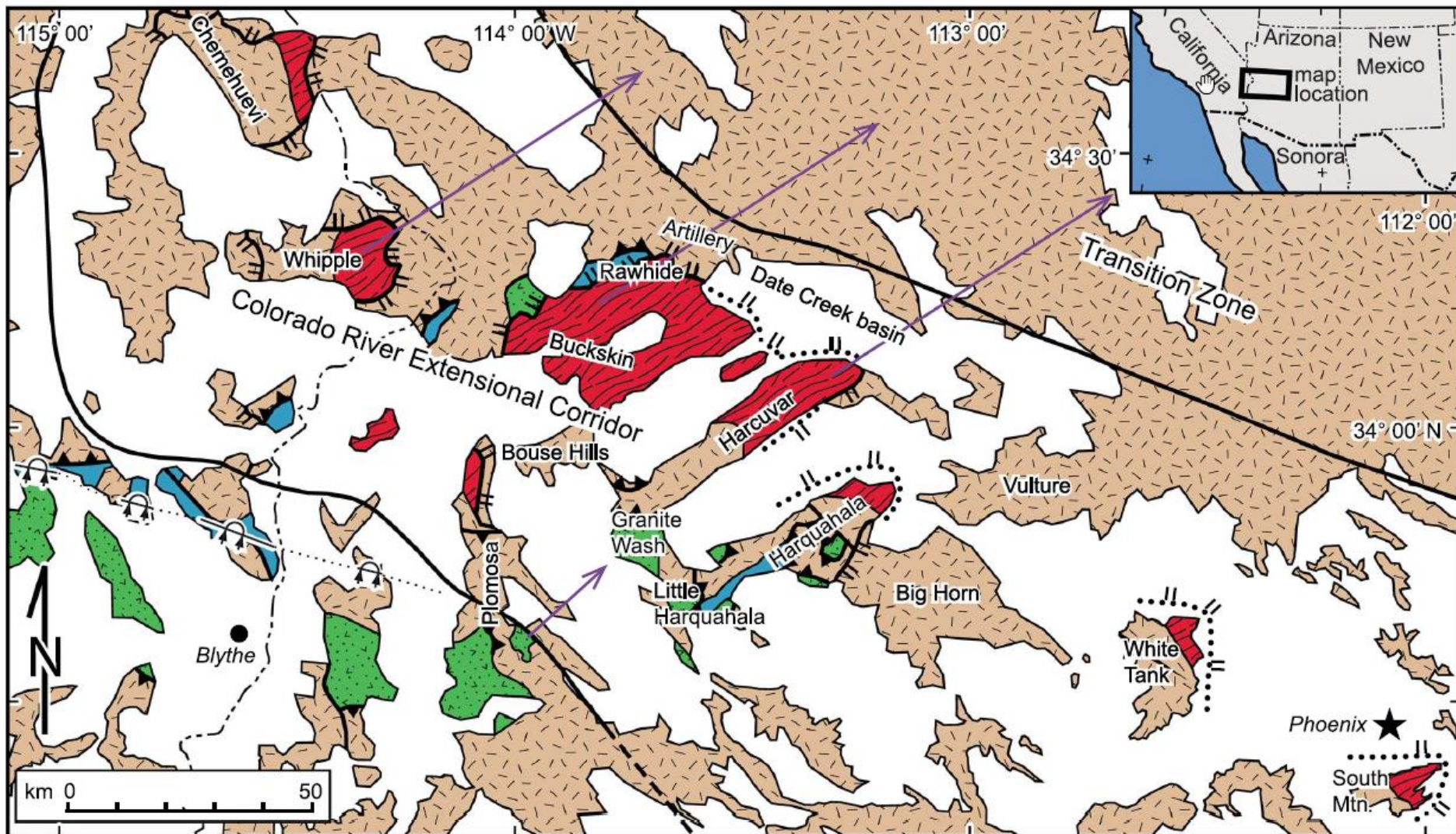


Core Complex Evolution II



Core Complex Evolution III





- Mesozoic metasedimentary and metavolcanic rocks
- Paleozoic metasedimentary rocks
- Tertiary to Proterozoic crystalline rocks with Oligocene to Miocene mylonitic fabric
- Bedrock, undivided

- Thrust fault
- Extensional detachment fault
- Buried detachment fault
- Overturned syncline

